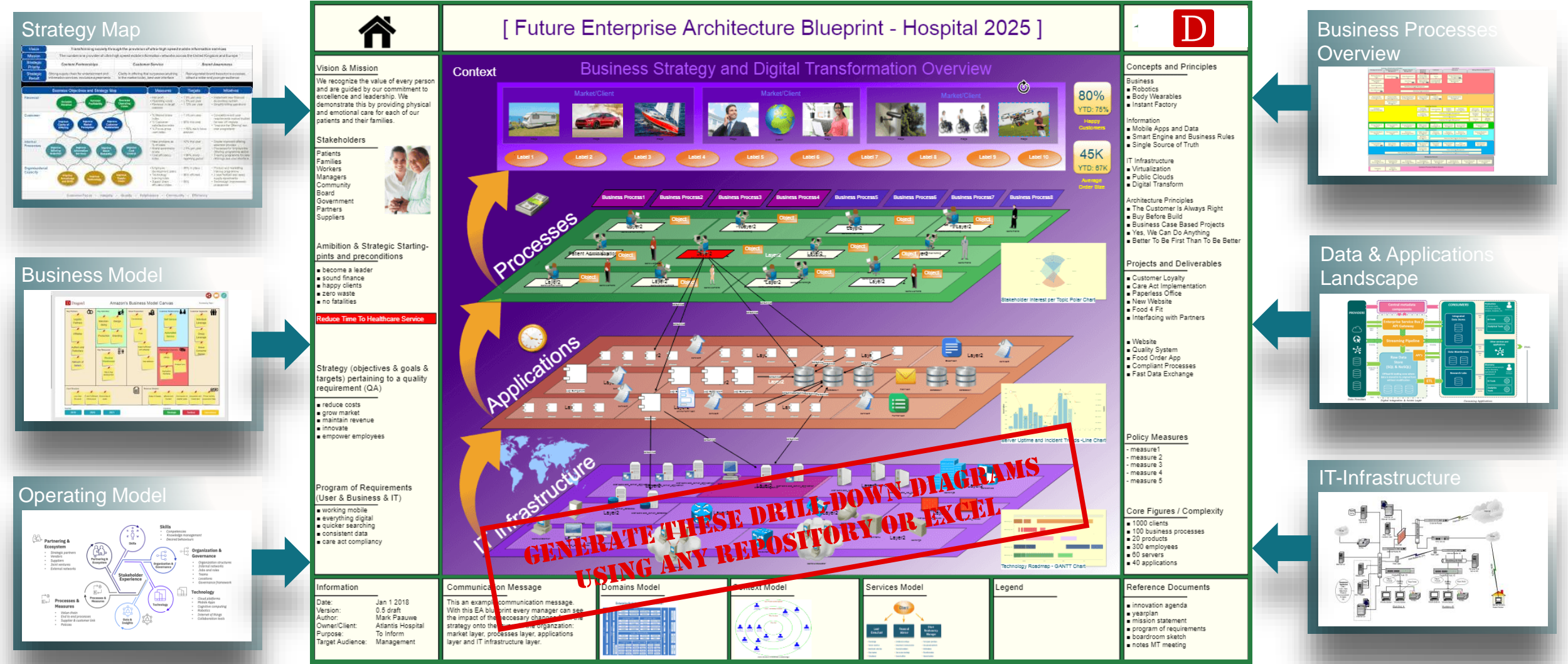




Help the agile strategy, business model and stakeholders move forward to realize goals.
Discover & solve weaknesses in processes, data, application, IT infrastructure and security.
Document EA on Dragon1 in an Architecture Center. Create and generate architecture views & enterprise views for every stakeholder.



BANKING – INSURANCE – RETAIL – AGRICULTURE – TELCO/IT – GOVERNMENT – AUTOMOTIVE – LOGISTICS – EDUCATION – HEALTHCARE

All diagrams above can be created in the Dragon1 Visual Designer or generated from an Excel Sheet, the Dragon1 Repository from JSON/XML via interfaces of systems like SAP. Dragon1 populates editable visualization templates with the provided data. All diagrams are interactive/click-through in the Dragon1 Viewer: www.dragon1.com/demo



Help the agile strategy, business model and stakeholders in any industry move forward to realize goals



Discover and solve weaknesses in processes, data, applications, IT infrastructure and security. Document enterprise architecture on Dragon1 as Architecture Center. Create and generate architecture views and enterprise views for every stakeholder.

Eco Systems & Platforms, is that the future strategy for the business?

Let's document EA on Dragon1 as Architecture Center to speed up digital transformation and realize business goals!

Generate and create architecture views and enterprise views that help stakeholders to move forward!



Enterprise Architecture Appreciation Workshop

Documenting Enterprise Architecture on Dragon1 in an **Architecture Center helps the agile Strategy, Business Model and Stakeholders move forward to realize goals, making the organization more secure, efficient and profitable**

For C-level at SMEs & LMEs

Note: Dragon1 has an ROI of < 3 months

v4.5c, Aug 6 2021



Workshop Agenda

1. **WHY** - Why document the Enterprise Architecture of your company in an **Architecture Center** and align it agile with the Stakeholders, Business & IT strategy and business model?
 - Detailed Arguments
2. **HOW** - Understanding how Dragon1 enables users to visualize views, analyze and comment on the holistic Company in order to discover strengths & solve weaknesses.
 - Overview Diagram
3. **RISKS** - What risks could your company have if Enterprise Architecture is not Documented on Dragon1 in an Architecture Center with views and not aligned with the Strategy?
 - Detailed Insights → YES, WHAT ABOUT OUR VULNERABILITY???
4. **CASES** - Three example cases where documenting EA in an Architecture Center and aligning it with the strategy, helps to solve weaknesses and prevent problem.
5. **QUICK SCAN** - Quick Scan to understand how well the EA is already documented at the company with views and aligned with the Strategy & Business Model.
 - Checklist
 - Workshop Assignment
6. **IMPLEMENT** - Implement EA governance processes and resource them adequate
7. **DEMOS** - Go to dragon1.com/demo and do template demos
8. **TRIAL** - Create a free trial account and start building an Architecture Center



Workshop Take Aways

1. By Documenting EA in an **Architecture Center** on Dragon1 and creating or generating enterprise views for stakeholders, you speed up Digital Transformation in order to realize business goals and make your organization more efficient and profitable.
2. It is a **NO-BRAINER** benefit to document EA and visualize architecture views and enterprise views for stakeholders.
3. Enterprise Architecture (EA) is the set of concepts, principles, standards and technologies in your company that enables (or blocks) innovation and transformation. It align IT Services with your Business Strategy
4. Enterprise Architecture (principles, standards, ...) tells how well the objects and their dependencies, that make up your company, support the strategy and business model or not.
5. Architecture Principles (APs) are working mechanisms that are always true. APs are NOT general rules and guidelines.
6. Dragon1 is a SaaS platform for Enterprise Architecture.
7. Documenting EA as Architecture Center by generating many views, solves problems and lowers risks in many processes, applications, data, IT infrastructure and security.
8. Users are supported to document Enterprise Architecture in an Architecture Center with many real time views.
9. Users are supported to generate drill-down architecture visualizations (simple or complex enterprise views) from any repository, the Dragon1 repository and excel sheets.
10. Users are enabled to discover and report strengths & weaknesses in the architecture views & enterprise views and solve the weaknesses.

1. Why document the Enterprise Architecture of the company in an **Architecture Center** on Dragon1 and align it with the Strategy & Business Model ?



Enterprise Architecture is...

The whole of relationships and dependencies between:

Objects:

- Business Processes
- Applications
- Data
- IT Infrastructure & IoT Devices (Servers, Networks, Devices, Clouds and Sensors)

Artifacts:

- Architecture Principles
- Business Capabilities
- Design Patterns
- IT Standards
- Business Rules
- Policies
- Dashboards, Plans, Designs, Reports and other documents

(only core objects and core artifacts are listed here)

Your company constantly **CHANGES**

Every day the objects, artifacts and relationships in your company change.

Because your company is a holistic system, every change will cause a (major) impact on other (key) objects & artifacts.

Most companies have old fashioned objects from decades ago that do not collaborate well with modern objects. This slows down digital transformation and realizing business goals.

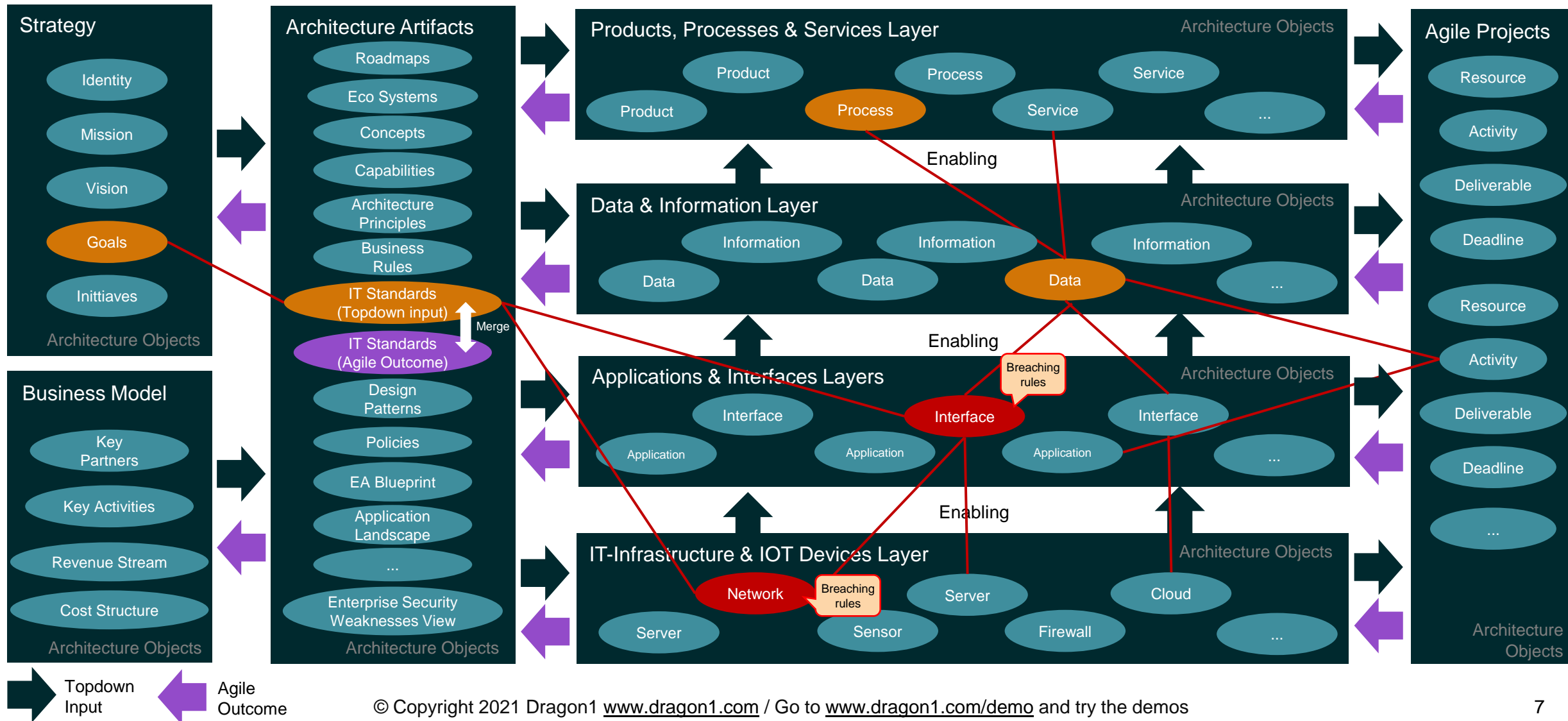
Benefits of Documenting EA in an Architecture Center on Dragon1

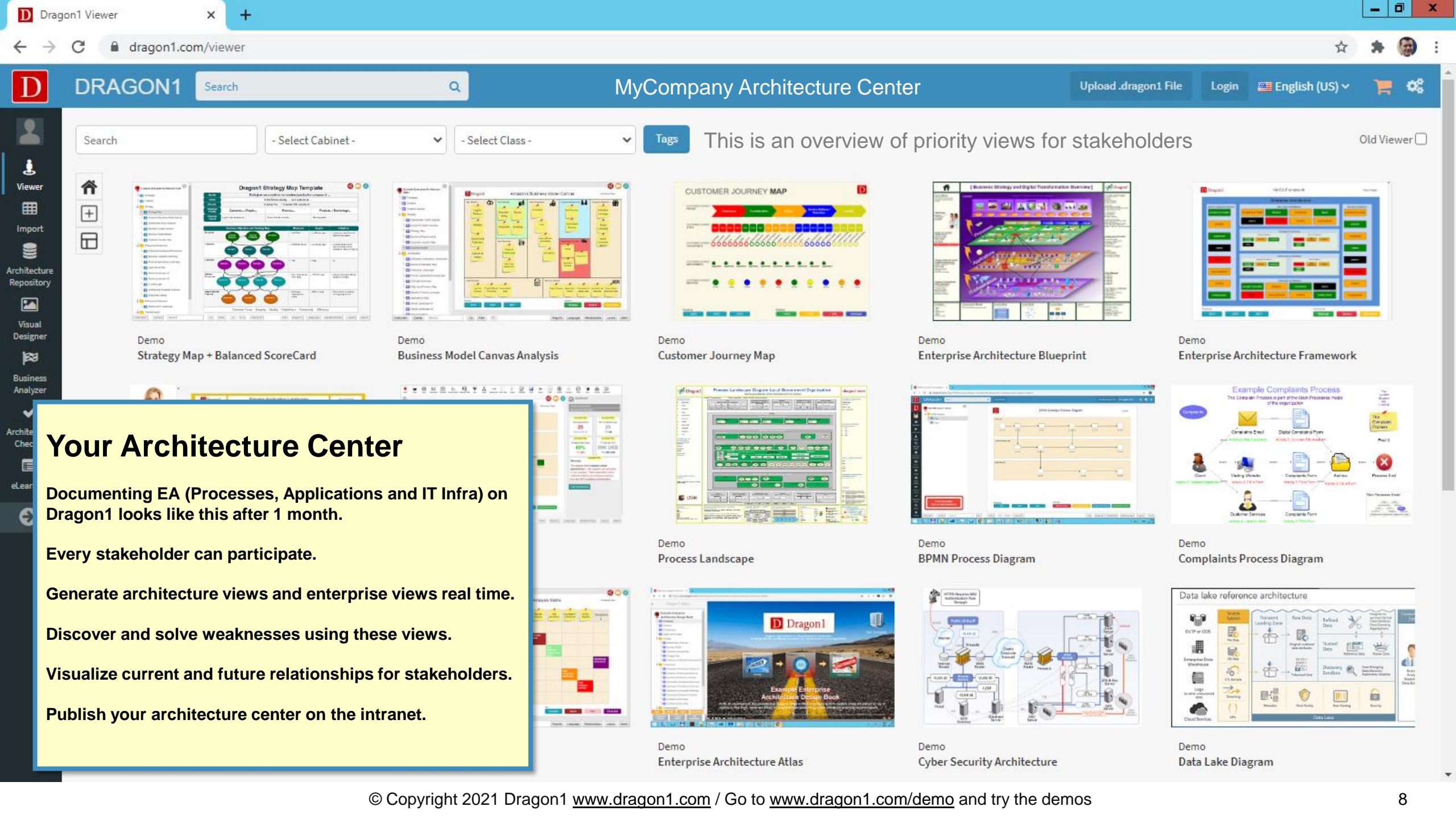
1. Generate and create architecture views and enterprise views quickly that show strengths and weaknesses in your company.
2. Insights and overview in hidden weaknesses helps to solve them, so your company will produce products and service clients better.
3. Remove technical debt proactively, improve performance and lower costs and risk using the architecture views and enterprise views!
4. When you document your Enterprise Architecture and align it with the strategy and business model, you will see that many objects are not compliant with the principles, rules and standards you want to use because of your strategy and business model.
5. The sooner you have your EA documented and visualized with views, the sooner you can start to make every object compliant with the principles, rules and standards.

2. How - Understanding how Dragon1 enables users to visualize, analyze & comment the Holistic Company in order to discover & solve weaknesses



Existing, but often not visible relationships between Strategy, Business Models, Objects and Artifacts and Agile Projects, that either block or enable transformation and innovation are discovered on Dragon1.





Your Architecture Center

Documenting EA (Processes, Applications and IT Infra) on Dragon1 looks like this after 1 month.

Every stakeholder can participate.

Generate architecture views and enterprise views real time.

Discover and solve weaknesses using these views.

Visualize current and future relationships for stakeholders.

Publish your architecture center on the intranet.

MyCompany Architecture Center

Upload .dragon1 File

Login

English (US)

Search

- Select Cabinet -

- Select Class -

Tags

This is an overview of priority views for stakeholders

Old Viewer



Demo
Strategy Map + Balanced ScoreCard



Demo
Business Model Canvas Analysis



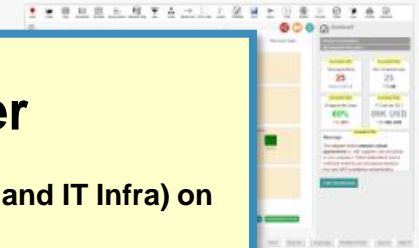
Demo
Customer Journey Map



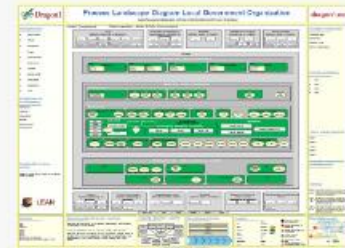
Demo
Enterprise Architecture Blueprint



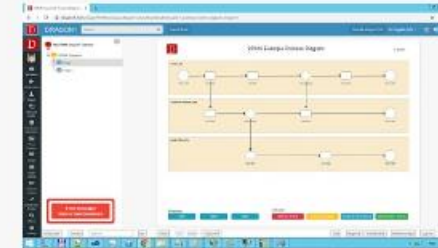
Demo
Enterprise Architecture Framework



Demo
Process Landscape



Demo
BPMN Process Diagram



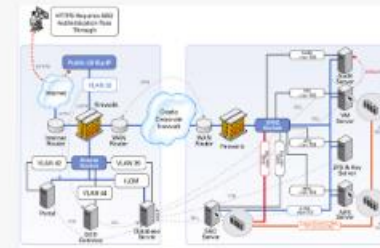
Demo
Complaints Process Diagram



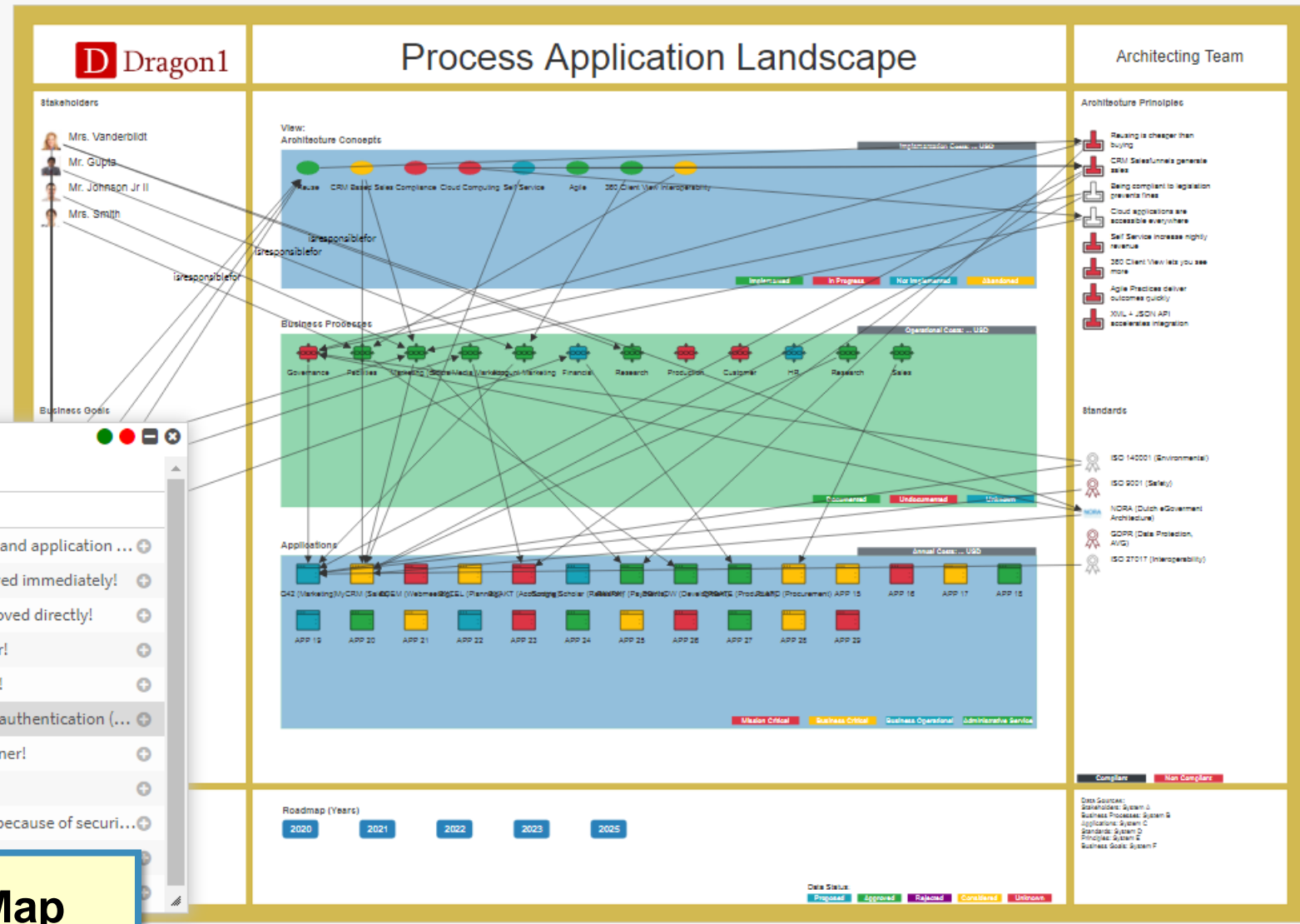
Demo
Enterprise Architecture Atlas



Demo
Cyber Security Architecture



Demo
Data Lake Diagram



Your Process Application Map

Dragon1 Dashboard

+

← → ↺ dragon1.com/workplace/dashboard

D

Dragon1

Search

Expert Mode

English (US)

D

Dashboard

Workplace

No process message

Step by Step Guide (PDF)

Update

Background

Workplace

Collaboration

Viewer

Resource Center

Architecture Repository

Visual Designer

Import

Business Analyzer

Architecture Checker

Search

Settings

Strategy Maps

0

Approved: 0 Pending: 0

Unused: 0 Incomplete: 0

Business Models

0

Approved: 0 Pending: 0

Unused: 0 Incomplete: 0

Customer Journeys

0

Approved: 0 Pending: 0

Unused: 0 Incomplete: 0

Layered EA Blueprints

0

Approved: 0 Pending: 0

Unused: 0 Incomplete: 0

Process Landscapes

0

Approved: 0 Pending: 0

Unused: 0 Incomplete: 0

Data Landscapes

0

Approved: 0 Pending: 0

Unused: 0 Incomplete: 0

Application Landscapes

0

Approved: 0 Pending: 0

Unused: 0 Incomplete: 0

IT Landscapes

0

Approved: 0 Pending: 0

Unused: 0 Incomplete: 0

Stakeholders

0

Approved: 0 Pending: 0

Unused: 0 Incomplete: 0

Requirements

0

Approved: 0 Pending: 0

Unused: 0 Incomplete: 0

Principles

0

Approved: 0 Pending: 0

Unused: 0 Incomplete: 0

Standards

0

Approved: 0 Pending: 0

Unused: 0 Incomplete: 0

Capability Heatmaps

0

Approved: 0 Pending: 0

Unused: 0 Incomplete: 0

Solution Overviews

0

Approved: 0 Pending: 0

Unused: 0 Incomplete: 0

Project Portfolios

0

Approved: 0 Pending: 0

Unused: 0 Incomplete: 0

Technology Roadmaps

0

Approved: 0 Pending: 0

Unused: 0 Incomplete: 0

Data Items in Repository

Create View

New Models

Create View

New Visualizations

Create Visualization

Create Atlas

New Comments on Visualizations

View Visualizations

Your Architecture Dashboard

Recent User Activities

Recent Work

09:11

3-8-2021

Teams

- Your teams
- My Team
 - 1. Onboarding Tasks
 - 2. Exploring Tasks
 - 3. Working Tasks
 - 3.1 Outsourcing Rationalization
 - 4. Data Admin Tasks
 - 5. Modeling Tasks
 - 6. Architecting Tasks
 - 7. Searching Tasks
 - 8. Reporting Tasks
 - 9. Learning Tasks
 - 9.1 My First BPMN Project
 - 9.2 My First APM Project
 - 9.3 My First EA Project
 - 9.4 My First Data Management Project
 - 9.4 My First Dashboard Project

9.3 My First EA Project

> workplace > home

All Tasks To Do In Progress Review Done + Add Task

1. Create an Architecture Atlas with Pages Create an Atlas to build a EA Dossier with Views Add a Page to the Atlas	2. Create an Enterprise Layers Visualization (AS-IS) Create a Model Create Enterprise Layers Diagram Link Page to Visualization	3. Create a Solution Architecture Diagram (TO-BE) Create a Solution Architecture Diagram Canvas Link Page to Visualization
4. Draw a Solution Architecture on the Canvas Draw a Solution Model on the Visualization Canvas	5. Publish the Atlas Publish the Atlas Publish the Visualizations	6. View the Atlas in the Viewer View the Atlas in the Viewer Add a Comment to a Diagram
7. Add or Edit Stakeholders Add or Edit Stakeholders Add Actors	7. Add or Edit Issues Add or Edit Goals Add or Edit Issues Add Solutions	7. Add or Edit Capabilities Add or Edit Capabilities Add Relationships
8. Add or Edit Processes Add or Edit Processes Add Relationships	9. Add or Edit Data Objects Add or Edit Objects Add Relationships	10. Add or Edit Applications Add or Edit Applications Add Relationships
12. Add or Edit Locations Add or Edit Locations Add Relationships	13. Add or Edit Principles Add or Edit Principles Add Relationships	

Days left in account: 6738 View Open Issues Reset Page

Task Details

13. Add or Edit Principles
Task url: [collaboration/principles](#)
Task status: open

Task steps:

- Step 1: ...
- Step 2: ...
- Step 3: ...

Task policy rules:

- Rule 1: ...
- Rule 2: ...
- Rule 3: ...

Appointed users:
- none -

Task demo:
- no demo link -

Task help:
- no help page -
Got questions or suggestions? Give feedback now!

Your Workplace Task board

Home - Onboarding | Dragon1

dragon1.com/workplace/home

DRAGON1

Search

Expert Mode

English (US)

View Open Issues

Reset Page

Teams

Your teams

My Team

1. Onboarding Tasks

2. Exploring Tasks

3. Working Tasks

3.1 Outsourcing Rationalization

4. Data Admin Tasks

5. Modeling Tasks

6. Architecting Tasks

7. Searching Tasks

8. Reporting Tasks

9. Learning Tasks

9.1 My First BPMN Project

9.2 My First APM Project

9.3 My First EA Project

9.4 My First Data Management Project

9.4 My First Dashboard Project

3.1 Outsourcing Rationalization

> workplace > home

All TasksTo DoIn ProgressReviewDone+ Add Task

Document Current State

Add Apps/Systems

Add Services

Add Business Units/Stakeholders

Document Target State

Add Apps/Systems

Add Services

Add Business Units/Stakeholders

Create Viewpoint Business Service Owner

Define Apps/Cap.

Define Contracts

Define IT-Infra components

Create Viewpoint App. Owner

Define Apps/Cap.

Define Contracts

Define IT-Infra components

Create Viewpoint IT-Infra Owner

Define Apps/Cap.

Define Contracts

Define IT-Infra components

Create Viewpoint Contracts Proc. Owner

Define Apps/Cap.

Define Contracts

Define IT-Infra components

Setup KPI Dashboard

task x

task y

task z

Manage Data Sources

task x

task y

task z

Generate Risk Report

Impact SLA Mapping

Impact Contracts

ghi

Generate Contracts View

Before

After

task x

Analyze Future State

abc

def

task x

Outsourcing Rationalization Demo

Study the Outsourcing Rationalization Demo

Task Details

Document Target State

Task url: <https://www.dragon1.com>

Task status: open

Task steps:

Step 1: ...

Step 2: ...

Step 3: ...

Task policy rules:

Rule 1: ...

Rule 2: ...

Rule 3: ...

Appointed users:

- none -

Task demo:

- no demo link -

Task help:

- no help page -

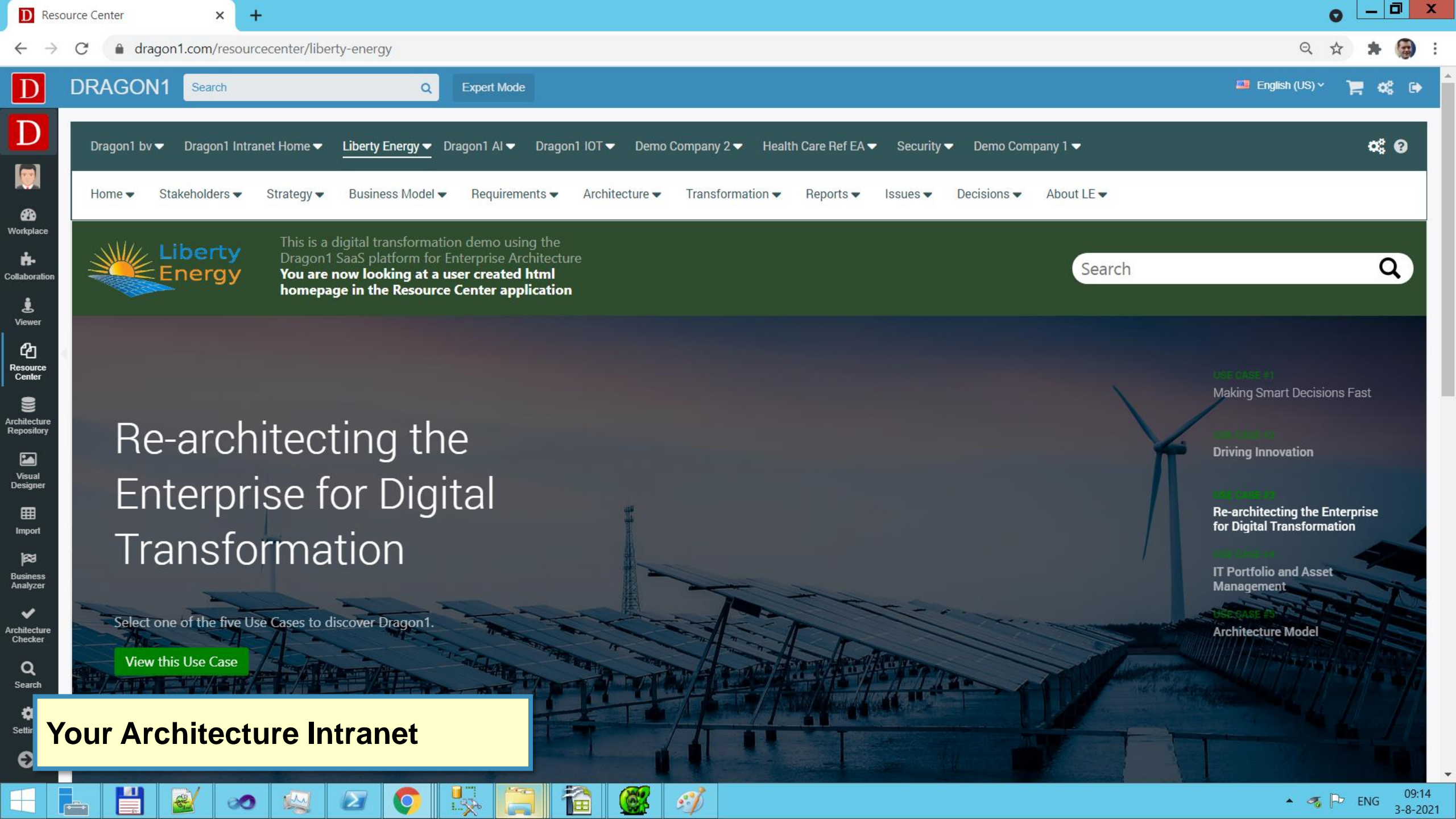
Got questions or suggestions?

Give feedback now!

Your Workplace Task board

09:13

3-8-2021



🔍 Search

⚙️ Settings

🔄

👤 Manual Report

👤 Graphs

Score Board (KPIs)

Today: Tuesday, August 3, 2021
Year to date (YTD): Monday, August 3, 2020

Total number of official applications 11 KPI-01	# Applications not documented fully 6 KPI-02	# Applications without functional fit 6 KPI-03	# Applications without technical fit 9 KPI-04	# Applications breaching security policy rules 2 KPI-05
Growth number of official applications YTD -0 KPI-01b	Growth not fully documented applications YTD -0 KPI-02b	# Applications without functional fit YTD 0 KPI-03b	# Applications without technical fit YTD 0 KPI-04b	# Applications breaching security policy rules YTD 0 KPI-05b

List of Applications not documented fully ▾

Tag contains official and type, documenturl, owner or description are empty (calculated)

#	ID	Name	Descr	Ref	Type	Tags	Category	Data Status	Owner	Data
1	291315		?	UniqueID=	0	official		Unknown	?	...
2	340784		?		0	imported data,official		Unknown	?	...
3	291287	Acts	?	UniqueID=Acts	0	official		Unknown	?	...
4	340783		?		0	func fit, official		Unknown	?	...
5	328660	App1- Salesforce	This is our CRM application		?	official, func fit,security breach		Unknown	?	...
		pp	?		?	official,security breach,func fit, tech fit		Candidate	?	...

Your APM Report (after 1 week)

3. RISKS - What risks could your company have if Enterprise Architecture is not Documented on Dragon1 and not aligned with the Strategy?



Risks you might have if EA is not documented on Dragon1 and aligned with Strategy:

- Not knowing how safe, secure and future proof the business & IT solutions, applications & IT are that you currently have or want to buy.
- Not knowing what the impact of change is (such as a lowered level of business services) caused by projects.
- Not knowing if you can execute the new business strategy, IT strategy or business model well enough or do it for the prognosed budget.
- Not knowing well enough the weaknesses, issues and risks in your processes, applications, data and ICT, and therefore not able to prioritize improvements well enough.
- Not knowing if you can make the IT Infrastructure less complex and better performing.
- Not knowing if you can adopt the cloud or implement new core information systems fast enough.
- Investors might be less willing to invest in your company.
- Not know which capabilities (resources, knowledge and expertise) you are missing for executing the IT Strategy and Business Model.
- Not knowing what information, you fail to communicate via your intranet to employees, like progress of projects, updated processes and policies or their role within the organization.
- Not knowing if you realize your security or sustainability goals.

You can Document and align your EA by...

By creating the following documents/visualizations & lists, you document and align your EA and preventing or reduce the risks on the left:

- Enterprise Architecture Document & Views
 - Business Architecture Document & Views
 - Data Architecture Document & Views
 - Application Architecture Document & Views
 - IT Architecture Document & Views
 - Security Architecture Document & Views
 - Solution Architecture Documents & Views

The docs contain objects meta data & diagrams such as EA blueprint, Application Landscape, IT Roadmap & Security Weaknesses View,...

In the documents will be lists of:

- By C-level Approved Architecture Principles
- By C-level Approved Business Capabilities
- By C-level Approved Business Rules
- By C-level Approved IT Standards
- By C-level Approved Design Patterns
- By C-level Approved Policies (Security, ...)

It is a Dragon1 good practice to have processes and procedures defined for approving these artifacts and managing & treating them as data assets

4. CASES - Three example cases where documenting EA on Dragon1 and aligning it with the strategy, helps to prevent problems.



Implementing a new Information System

Suppose the company has decided to implement a new information system, for instance, a new CRM, a new Dataware House, a chatbot or a new Banking Application.

Replacing the old system with the new system will often have an impact on many other systems, processes, data and IT Infrastructure devices. And this impact can cause a reduced level of services to clients. Projects do fail because of this.

An information system is a coherent set of applications, interfaces and databases. The old system may have one or more applications that are interfacing with other systems in an outdated way. This could mean that also these other systems need to be updated or replaced.

It could also be that the old system or other systems are running on an old outdated operating system platform or IT infrastructure components that cannot host the new information system.

If you have documented your EA and aligned it with the strategy, you always know the important dependencies of objects and which principles and IT standards your objects (processes, applications, data and IT Infra components) make use of. And you would be always busy with making sure that outdated and non-compliant objects are replaced timely.

You also have planned a more realistic timeline and budget for implementing the new information system and organize temporary solutions alternatives during the migration.

Cloud Adoption

Suppose the company has decided to migrate as many applications as possible to the cloud, in order to cut costs or have better integration of applications or make them better accessible for a large workforce.

Migrating applications to the cloud often also cause business processes to change (fundamentally) because of the new features that are offered and it raises issues and questions on data privacy.

If you have documented your EA and aligned it with the strategy, you will be better prepared to deal with these issues during the application migration.

Cyber Security

Many companies are working with business and IT solutions for four different decades. And many companies do not have upgraded and updated all their solutions to the latest version.

This causes many companies not to be fully aware of the potential cyber security risks they are having.

If you have documented your EA and aligned it with the strategy, you will be more aware of the cyber security risks and be constantly busy with removing or reducing them.

You will be more aware of the risks because you which and where you are making use of outdated principles and standards and where you have not implemented policies and business rules.

5. Quick Scan to understand how well the EA is already documented at the company and aligned with the Strategy & Business Model.



Checklist for existing or missing Architecture Views & Enterprise Views

The following list helps to check whether EA is documented well enough to prevent risks and solve weaknesses and if the EA is aligned with the Strategy and Business Model.

Are approved, pending review, rejected, mandatory, forbidden or status unknown versions of the following items easily accessible for use or reference by C-level stakeholders, IT Management, the EA team and project managers?

- | | |
|---|--|
| <input type="checkbox"/> Strategy Maps | <input type="checkbox"/> Technical Debt & Issues Views |
| <input type="checkbox"/> Business Models | <input type="checkbox"/> Enterprise Architecture Blueprints |
| <input type="checkbox"/> Operating Models | <input type="checkbox"/> HR Competence & Issues Views |
| <input type="checkbox"/> High Level Business Process Overviews | <input type="checkbox"/> Logistics & Issues Views |
| <input type="checkbox"/> High Level Data Landscapes | <input type="checkbox"/> High Level Enterprise Security Views (& Issues) |
| <input type="checkbox"/> High Level Application Landscapes | <input type="checkbox"/> Technology Roadmaps |
| <input type="checkbox"/> High Level Business Capabilities Overviews | <input type="checkbox"/> List of Key Architecture Principles |
| <input type="checkbox"/> IT Infrastructure & IOT Landscapes | <input type="checkbox"/> List of Key IT Standards |
| <input type="checkbox"/> Application Integration Issues Views | <input type="checkbox"/> List of Key Business Rules |
| <input type="checkbox"/> Data Object Duplication and Inconsistency Issues Views | <input type="checkbox"/> List of Key Policies |
| | <input type="checkbox"/> List of Needs & Priority Views per Stakeholder |

Workshop Assignment

A workshop isn't a workshop without assignment.

The assignment for building an Architecture Center is as follows:

Create 4 groups of 2 persons.

Have group #1 collect within 4 hours the most recent version of a strategy map diagram and business model diagram and have them try to find out the status of the model and the owner who may approved it.

Have group #2 collect within 4 hours the top 10 enterprise views, architecture principles, business rules, IT standards and technologies that C-level stakeholders find the most important ones for the company

Have group #3 collect within 4 hours the top 10 most important business processes, application, databases/objects and IT-infrastructure or IOT components.

Have group #4 collect within 4 hours the top 10 most important projects, there most important activities, deliverables and deadlines.

Come back after 4 hours and put all this information with post its on a brown paper or white board. Draw relationships and discuss & solve dis-aligned objects and issues.

Find where solutions in the company make use of outdated or unsecure principles, standards, rules and technologies. Try to determine the status of the data collected: is it approved, pending review, rejected, mandatory, forbidden or unknown.

6. Architecture Principles are Working Mechanisms, not general rules or guidelines. APs should be approved for usage by the CIO.



Examples of True Architecture Principles

1. By storing and retrieving a data object only from an appointed source, higher data quality is enabled, and it is prevented inconsistent versions of that data object will be used. (**Concept: Single Source of Truth**)
2. By interfacing between applications only based on the interface specification and not on internal workings in another application, higher availability is enabled, and it is prevented that applications will crash because of other updated application. (**Concept: Loosely Coupling**)
3. By only starting up projects that are related to business goals and have a valid financial business case, it is enabled that every project adds value. (**Concept: Business Case**)
4. By motivating employees weekly to work on their permanent personal development and education plan, it is enabled that the workforce stays up-to-date modern, and it is prevented that employees hold on to old technologies and methods. (**Concept: Permanent Education**)
5. By removing processes and applications that do the same in the same or different way, it is enabled that the company is more ready for change, and it is prevented that outdated business rules are implemented too long (**Concept: Deduplication**)

Examples of False Architecture Principles

- Data is an asset that has value to the enterprise and is managed accordingly. (**Concept: Data as an Asset**)

=> This is a false architecture principle because this statement does not describe a working mechanism and often such a statement is claiming facts that are not actually true. Therefor it has no added value to write it down or to use it.

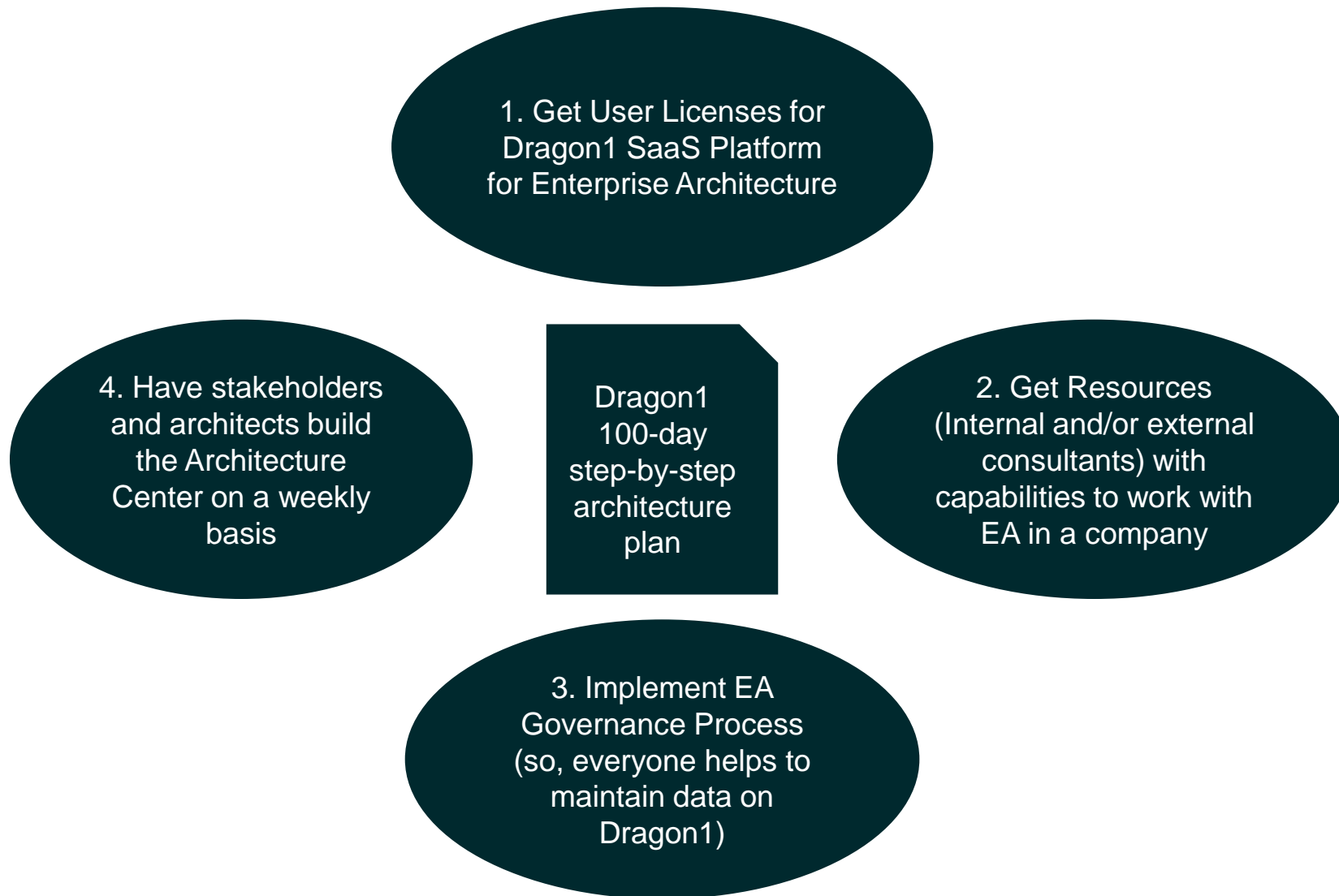
A better version is:

By always managing data as an asset, by means of an implemented and monitored data policy, the quality of data will be higher (timelier and more accurate) and therefor the data will be of higher value to the enterprise.

- Applications are easy to use. The underlying technology is transparent to users, so they can concentrate on tasks at hand. (**Concept: Ease of Use**)

=> This is a false architecture principle because this statement does not describe a working mechanism and often such a statement is claiming facts that are not actually true. Therefor it has no added value to write it down or to use it. It should be rewritten as working mechanism so steps will be made to implement the mechanism.

7. Implement and Resource Governance Processes



“By building an architecture center on Dragon1 you provide stakeholders with up-to-date architecture views they need for their work.

This instead of not knowing which views stakeholders most need at all and people waste time looking for diagrams and reinvent the wheel.

Dragon1 helps you to get much more value from your other EA Tools, repositories and SAP”



Detailed Workshop Materials

Process Application Landscape

Example Enterprise Architecture Atlas

- Frontpage
- Contents
- Strategy
 - Strategy Map
 - Amazon's Business Model Canvas
 - Stakeholder Onion Diagram
 - Business Goals Overview
 - Business Requirements
 - Customer Journey Map
- Enterprise Architecture
 - Enterprise Architecture Framework
 - Business Capability Heat Map

Dragon1

Process Application Landscape

Architecting Team

Stakeholders

- Mrs. Vanderbilt
- Mr. Gupta
- Mr. Johnson, Jr II
- Mrs. Smith

Business Goals

- Handling personal data safer
- Using less energy

Business Processes

- Governance
- Facilities
- Marketing (old)
- Sustainable Marketing
- Account Marketing
- Financial
- Research
- Production
- Customer
- HR

Applications

- Q42 (Marketing)
- MyCRM (Sales)
- ZOEM (Webmeeting)
- EXCEL (Planning)
- EXAKT (Accounting)
- Google Scholar (Research)
- PAYPAY (Payments)
- DEVNOW (Development)
- CREATE (Production)
- BLATO (Procurement)
- APP 15
- APP 16
- APP 17
- APP 18
- APP 19
- APP 20
- APP 21
- APP 22
- APP 23
- APP 24
- APP 25
- APP 26
- APP 27
- APP 28
- APP 29

Roadmap (Years)

- 2020
- 2021
- 2022
- 2023
- 2025

Architecture Principles

- Reusing is cheaper than buying
- CRM Salesfunnels generate sales
- Being compliant to legislation prevents fines
- Cloud applications are accessible everywhere
- Self Service increase nightly revenue
- SEO Client View lets you see more
- Agile Practices deliver outcomes quickly
- XML + JSON API accelerates integration

Standards

- ISO 140001 (Environmental)
- ISO 9001 (Safety)
- NORA (Dutch eGovernment Architecture)
- GDPR (Data Protection, AVG)
- ISO 27017 (Interoperability)

Compliant Non Compliant

Data Sources

- Stakeholders: System A
- Business Processes: System B
- Applications: System C
- Standards: System D
- Principles: System E
- Business Goals: System F

Dashboard

Filter: () Clear

Show related: ☒ Show compliance: ☒

Show All: ☒

Related Views & Visualizations

Management Information

Show All Hide All

Msg #1: 0 applications are compliant with standards

Show Hide

Msg #2: 0 applications are not using outdated technologies

Show Hide

Msg #3: 0 applications are logging activities

Show Hide

Msg #4: 0 applications are logging activities, compliant with standards and not use outdated technologies

Show Hide

Legend

DISCOVER

Errors Warnings Successes

45 37 0

SUGGESTED

Total Processes

22

New in 2021 3

SUGGESTED

Total Applications

25

New in 2021 3

SUGGESTED

Duplicate Applications

5

SUGGESTED

Non Compliant Apps

25

Settings Fullscreen Center Search Go Filter A4 100% Player off

Edit Data Reports Dashboard Relationships Layout Match

Example Screenshot of a generated diagram on Dragon1

You see a generated drill down diagram that was published in an Architecture Center on Dragon1.

Use the 3 DISCOVER buttons at the right to highlight weaknesses (breaches of principles, rules & standards).

Objects with errors get a red label.

Objects with warnings get an orange label.

On mouse over, you get the details in a popup box.

© Copyright 2021 Dragon1 www.dragon1.com / Go to www.dragon1.com/demo and try the demos

21

Dragon1 Wireframe for your Architecture Center



- Write down in the boxes the stakeholder, their need and a priority architecture view or enterprise view. Refer to processes, data, applications & IT parts.
- Optionally write down the strength, weakness (like breached principles and standards) or other issue that should be addressed by the view.
- Optionally write down per priority view what data is on it, the team that should provide input and when the view should be available.
- In practice an organization has 50 views. These are often grouped into 4 architecture layers and grouped into 8 domains.

Name Architecture Center			
<u>Stakeholder</u> <u>Need</u> <u>Priority View</u>	<u>Stakeholder</u> <u>Need</u> <u>Priority View</u>	<u>Stakeholder</u> <u>Need</u> <u>Priority View</u>	<u>Stakeholder</u> <u>Need</u> <u>Priority View</u>
<u>Stakeholder</u> <u>Need</u> <u>Priority View</u>	<u>Stakeholder</u> <u>Need</u> <u>Priority View</u>	<u>Stakeholder</u> <u>Need</u> <u>Priority View</u>	<u>Stakeholder</u> <u>Need</u> <u>Priority View</u>
<u>Stakeholder</u> <u>Need</u> <u>Priority View</u>	<u>Stakeholder</u> <u>Need</u> <u>Priority View</u>	<u>Stakeholder</u> <u>Need</u> <u>Priority View</u>	<u>Stakeholder</u> <u>Need</u> <u>Priority View</u>

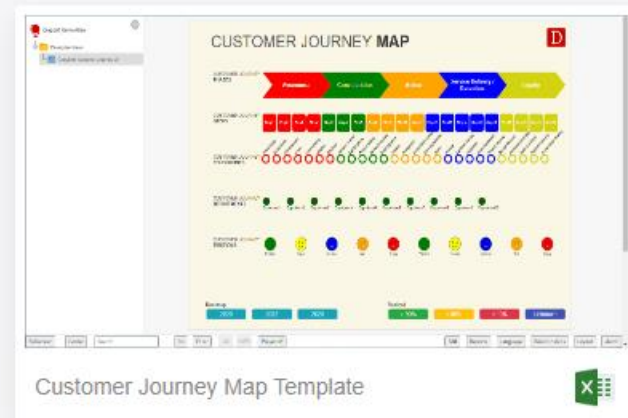


Dragon1 Templates, Charts & Maps Demo

Generate Diagrams & Dashboards using a Repository or Excel Sheet

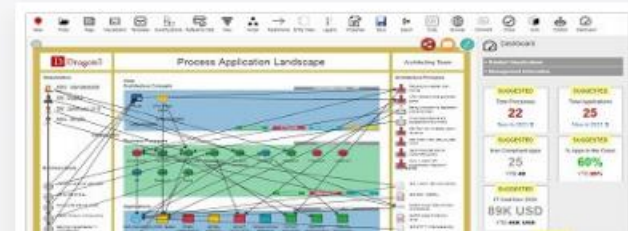
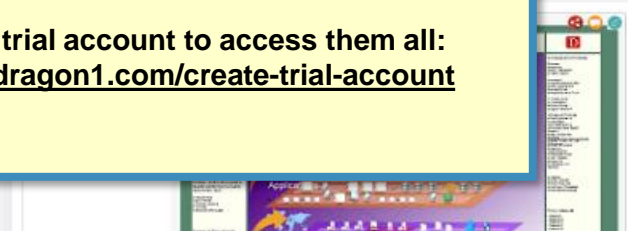
[Read more](#)

Automotive Industry



Go to <https://www.dragon1.com/demo> and try all our templates & demos.

Create a free trial account to access them all: <https://www.dragon1.com/create-trial-account>

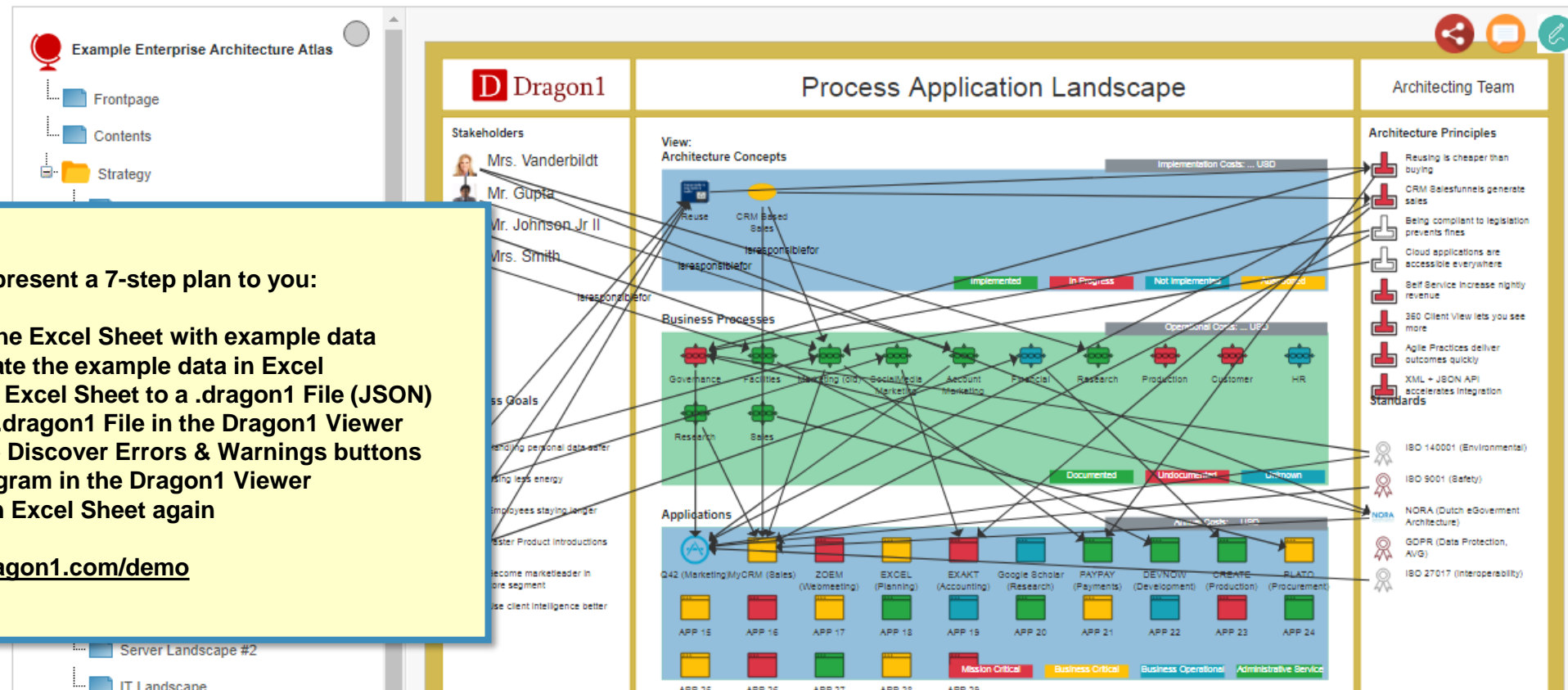


Generate Process Application Map, Compare Models and Filter Data

Download Excel Sheet

Convert to .dragon1 File

Upload & View .dragon1 file



All our demos present a 7-step plan to you:

1. Download the Excel Sheet with example data
2. Edit or update the example data in Excel
3. Convert the Excel Sheet to a .dragon1 File (JSON)
4. Upload the .dragon1 File in the Dragon1 Viewer
5. Click on the Discover Errors & Warnings buttons
6. Edit the diagram in the Dragon1 Viewer
7. Export to an Excel Sheet again

<https://www.dragon1.com/demo>



[Future Enterprise Architecture Blueprint - Hospital 2025]



Vision & Mission

We recognize the value of every person and are guided by our commitment to excellence and leadership. We demonstrate this by providing physical and emotional care for each of our patients and their families.

Stakeholders

Patients
Families
Workers
Managers
Community
Board
Government
Partners
Suppliers



Ambition & Strategic Starting-points and preconditions

- become a leader
- sound finance
- happy clients
- zero waste
- no fatalities

Reduce Time To Healthcare Service

Strategy (objectives & goals & targets) pertaining to a quality requirement (QA)

- reduce costs
- grow market
- maintain revenue
- innovate
- empower employees

Program of Requirements (User & Business & IT)

- working mobile
- everything digital
- quicker searching
- consistent data
- care act compliancy

Information

Date: Jan 1 2018
Version: 0.5 draft
Author: Mark Paauwe
Owner/Client: Atlantis Hospital
Purpose: To Inform
Target Audience: Management

Context

Business Strategy and Digital Transformation Overview



Concepts and Principles

Business

- Robotics
- Body Wearables
- Instant Factory

Information

- Mobile Apps and Data
- Smart Engine and Business Rules
- Single Source of Truth

IT Infrastructure

- Virtualization
- Public Clouds
- Digital Transform

Architecture Principles

- The Customer Is Always Right
- Buy Before Build
- Business Case Based Projects
- Yes, We Can Do Anything
- Better To Be First Than To Be Better

Projects and Deliverables

- Customer Loyalty
- Care Act Implementation
- Paperless Office
- New Website
- Food 4 Fit
- Interfacing with Partners

- Website
- Quality System
- Food Order App
- Compliant Processes
- Fast Data Exchange

Policy Measures

- measure 1
- measure 2
- measure 3
- measure 4
- measure 5

Core Figures / Complexity

- 1000 clients
- 100 business processes
- 20 products
- 300 employees
- 60 servers
- 40 applications

Reference Documents

- innovation agenda
- yearplan
- mission statement
- program of requirements
- boardroom sketch
- notes MIT meeting

Communication Message

This is an example communication message. With this EA blueprint every manager can see the impact of the necessary changes from the strategy onto the layers in the organization: market layer, processes layer, applications layer and IT infrastructure layer.

Domains Model



Context Model



Services Model



Legend

1. What is EA?

- The Enterprise Architecture of your company is the coherent set of concepts, principles, rules and standards that guide and govern the innovation and development of your company to realize its strategy and business model.
- EA = Aligning IT Services with Processes and Strategy.
- Without EA, it is much harder to align the various layers and domains in your company with each other and with the (new) business model and strategy.
- With EA, everything will fit more and more better together.

2. EA Example (i)

- As company you always want to improve business continuity, increase cyber security and rationalize applications.
- Suppose you have 100 processes, 100 applications, 100 interfaces, 100 databases and 100 servers all making use of each other and everything is very tied up. Maybe no-one has clear overview of everything and anything.
- When working with EA you look at your strategy and business model and come up with, let's say, 10 application architecture principles.
- Architecture Principle #1 could be: **Fit for Use** - Applications must have a high functional fit and technical fit - a business process may only make use of an application if it support working with
- Architecture Principle #2 could be: **Maximum Reuse** - If an application or application can be reused it must be reused, instead of a new or other application being used
- Architecture Principle #3 could be: **Business Capability Driven Applications** – for every application a link with a business capability should be able to be made
- Having these architecture principles be approved by the CIO causes them to have the application landscape evolve into a more standardized landscape that will fit an everchanging strategy and business model much better.

2. EA Example (ii)

- Architecture Principle #4 could be: Alternative Services and Solutions Everywhere - ...
- Architecture Principle #5 could be: Single Source of Truth - ...
- Architecture Principle #6 could be: Less Vendor is Better - ...
- Architecture Principle #7 could be: Privacy By Design - ...
- Architecture Principle #8 could be: Standardization - ...
- Architecture Principle #9 could be: Integration - ...
- Architecture Principle #10 could be: Communication - ...
- Etc...



3. Do you Need EA?

- Working with EA enables you company to transform and innovate at a much lower cost and resistance.
- Working with EA in the Dragon1 way guarantees you can transform and innovate the way you want. And not be run by vendors.
- Working with EA guarantees you survive as company and stay in business.

4. How do we get started (today) ? (i)

To get started today you need to do 10 things:

1. Agree with Dragon1 on a 12 week process. Every week there are 2 sessions of 1 hour with the EA team: a training session and a product review session. After these 12 weeks you are up and running in working with EA. We love to do on site training, support and services also.
2. Get a Dragon1 Business Licence, so you can:
 - a. Configure the workplace task board
 - b. Setup an architecture data repository and start entering data
 - c. Generate 20 important architecture views
 - d. Publish them in the **[Company] Architecture Center** on Dragon1
 - e. Build an **[Company] Architecture Dashboard** on Dragon1
 - f. Setup an **[Company] Architecture Intranet** on Dragon1
 - g. All this within 3 months.

4. How do we get started (today)? (ii)

3. Implement an **[Company] Enterprise Architecture Governance process**. We have a template for that.
4. Build the **EA team** and **EA committee/board**. On the [Company] Architecture Intranet all the roles and teams are explained.
5. Configure the workplace task board on Dragon1 so everyone gets supported in every step of the way. Dragon1 is very easy to use.
6. Document the various policies (IT, Security, Architecture,) and reports (APM, BPM, SecM, ITSM,) on Dragon1. A policy is a set of rules, standards and principles
7. Document the high priority business issues and IT issues that need to be solved and have the EA team come up with concepts, principles and solutions for this.
8. Start collecting data, like on the diagram below and administer it on Dragon1 and generate diagrams on it. The focus is collecting data needed to solve the high priority issues first.
9. Start communicating working with EA in the company (via some eLearning modules on Dragon1 and via giving access to key stakeholders to the [Company] Architecture Intranet)
10. Start reporting to the CIO and EA committee and other teams on how well or how bad the current state is (not) compliant with the policies (standards, rules and principles) and (not) supports the strategy or business model

5. Who needs to be involved?

- CIO (R)
- CDO (CI)
- Strategist (CI)
- IT Management (CI)
- Security and Risk Management (CI)
- Architects (ACI)
- Business Analyst (CI)
- Department Heads (CI)

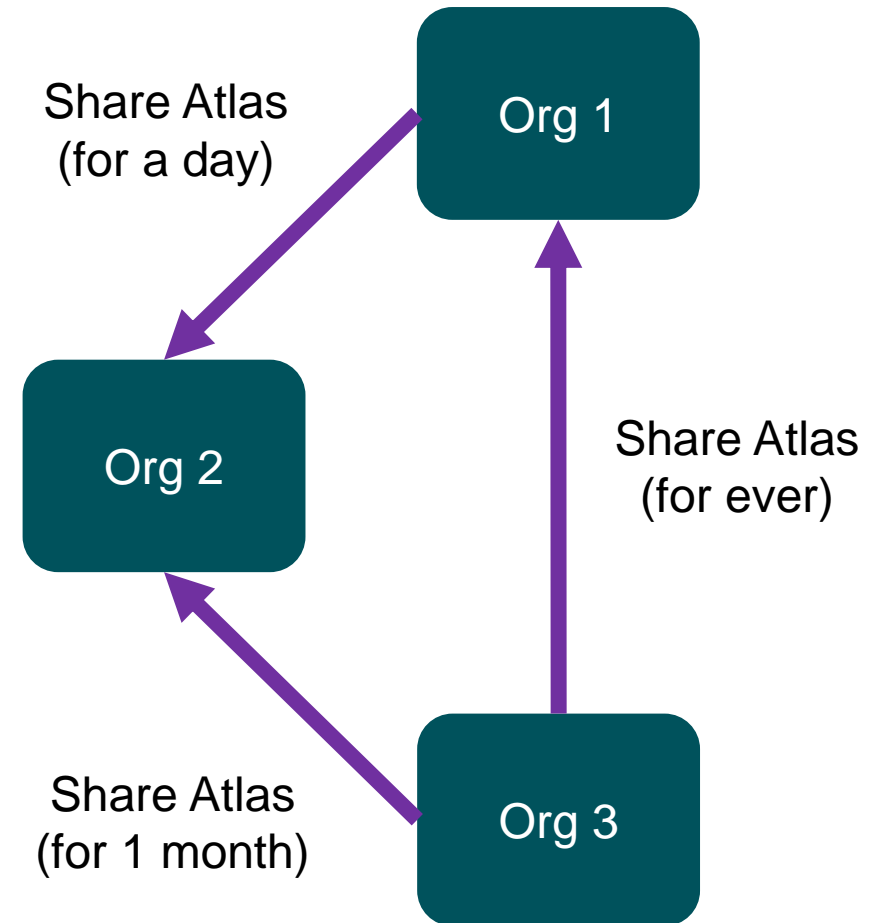
6. How to Measure and Improve Current State Architecture?

- List the priority issues/challenges to solve: Unknown Vulnerabilities?
- Document all kinds of data for that: Capabilities, Processes, Applications, IT Infrastructures components (see holistic sheet)
- Generate models and views using templates (see quick scan sheet)
- Match them with frameworks, reference models & industry architectures
- Do compliance checking on policies rules, standards and principles (logical and conceptual level coherence)
- Create roadmaps: prioritize, align with your strategy
- Invest in the skills of your people: they can never have enough training and education! → Cyber Security, AI, RPA, ...

7. How to Collaborate between Organizations?

The Platform Approach

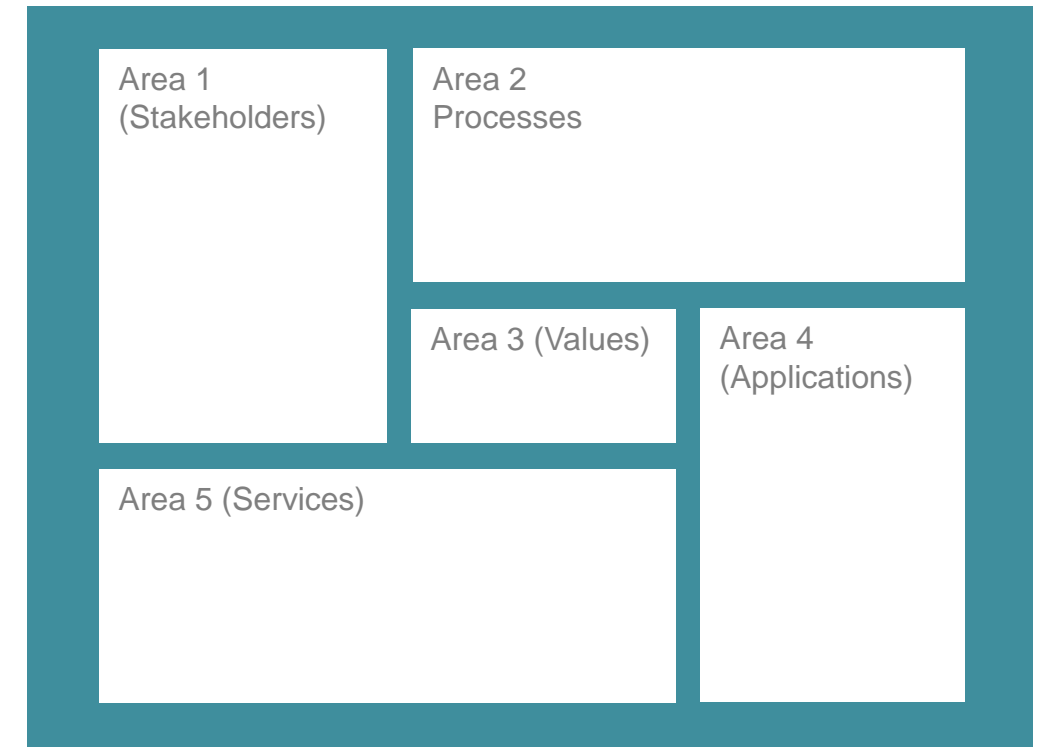
- Dragon1 Supports Sharing Atlases (A set of Visualizations, Models and Data) from one account to many others.
- Suppose your organization knows a lot about Security, you can share security reference models, principles visualization templates or even sets of icons with other organizations.
- You can provide it subscriptions based and time based



8. Generating Diagrams Real time by Populating Visualization Templates

Plus using the .dragon1 data format

- Dragon1 introduces the area entity class.
- A visualization template is a set of areas configured to group and contain data from the model.
- An area can have a position and act as grouping container for selected domains, entity classes, types and instances.
- Dragon1 has JSON based data format called .dragon1
- Every object is specified in a flat JSON string
- Data, Visualizations, Atlases, Models, Rules, Principles, Reports, Report definitions, really everything can be shared via the .dragon1 data file.
- Dragon1 prevents the vendor lock-in for you via its open .dragon1 data format



Example User Defined layout for a visualization template