



Why follow a Dragon1 Foundation Training?

Because you will learn the following basics of Dragon1 in a few days and start to visualize the various architectures and aspects of the organization aligned to stakeholder needs in such a way it supports strategic decision taking of CxO's and management.

Dragon1 is an Open Enterprise Architecture Method and conforms to the Architecture Framework ISO-Standard

Dragon1 open EA Method is the architecture method for Visual Enterprise Architecture (recognized by The Open Group in 2012).

Dragon1 open EA Method is an architecture method having, next to design and modeling, a focus in visualizing enterprise architecture. The Dragon1 open EA Method is especially intended to be used at strategic level by stakeholders such as, board members and CxO's, program managers, policy workers, architects, project leaders, developers and engineers.

Dragon1 is unique because as a method it observes the whole enterprise from an integral perspective using Visual Enterprise Architecture. This means that at conceptual, logical, physical and implementation levels of abstraction, different types of architecture visualizations can be created for stakeholders. With informal and formal visualizations, such as sketches, drawings, schemas and photographic images, fundamental strategic changes and innovation, risks are better manageable and easier to be controlled. Visualizations make complex issues and concerns, much better than written text, decidable. Your benefit: a better governance and ROI of the enterprise.

In Dragon1 architecture designs and working mechanisms of principles are the center pillars for every architecture project. Owner-Clients need to provide architects with a architecture design assignment, so the architects can start collecting requirements, and visualize possible realistic scenarios for realizing the designed enterprise-structures or solutions.

History and positioning of Dragon1

Dragon1 is an open architecture method. Dragon1 is available to the public since 2007 and is developed by Mark Paauwe, the founder of Visual Enterprise Architecture. The Dragon1 open method is maintained by the Dragon1 Architecture Foundation.

Dragon1 does not primarily focus on formally describing and modeling the IT architecture (supply side), but focuses on the informal visualization of architecture designs (total concept designs) of the whole enterprise. With that Dragon1 focuses on the business-side of the enterprise, the business architecture (demand side) and it collaborates integrally with other architectures such as information architecture, technical / IT architecture, security architecture, financial architecture and for instance human capital architecture.

Dragon1 is unique in visualizing and communicating architecture for decision support and architecture design, tailored to the needs and concerns of

Dragon1 EA Framework



stakeholders and their viewpoints. By visualizing complex concerns and issues from different angles and viewpoints, on big-sized A0-posters that show the impact of a solution in all layers and domains of the organization, Dragon1 architects facilitate stakeholders in choosing the best fitting option for the issue or

concern in question. In 'Positioning Dragon1 in Domains' it is made very clear which architecture domain is best suitable and applicable.

Visual Enterprise Architecture with Dragon1 EA Method

Dragon1 describes how board members, directors and managers can make sure that every part and facet of the enterprise functions as agreed, by having visual architecture designs, as part of the implementation strategy. With Dragon1 one can visualize needs (requirements) of the business and translate them into an optimal information facility (set of information systems) and how the demand for information services can be translated in an optimal IT Infrastructure supplying these information services. This for the short term and for the long term.

Dragon1 is suitable for enterprises (SME's and LME's). This because every organization is nowadays part of a system, chain or network, where it wants to maintain, conquer or expand its position. Dragon1 consists of standardized architecture professional products, architecture services, work processes and supporting materials for creating and implementing architecture in the enterprise.

Dragon1 is divided in method-'ways' and every method-way is divided into Dragon1 concepts. The most important Dragon1 concepts are also promoted into 21 open standards that are applicable independently in addition to other methods or the own way of working with architecture in an organization. These 21 open standards provide direction to work with architecture for decision making, using Visual Enterprise Architecture as focus.

Dragon1 has been found to be used effectively in conjunction with architecture frameworks such as TOGAF, DYA and ArchiMate and Dutch reference architectures, such as NORA, GEMMA, MARIJ, Petra, VERA en CORA.

Quick Introduction: What is Dragon1?

What is Visual Enterprise Architecture?

Visual Enterprise Architecture can be described as follows: 'The integral design and realization of (parts of) enterprises, with the frequent usage of stakeholder-aligned visualizations for common views, judgments and decision making.'

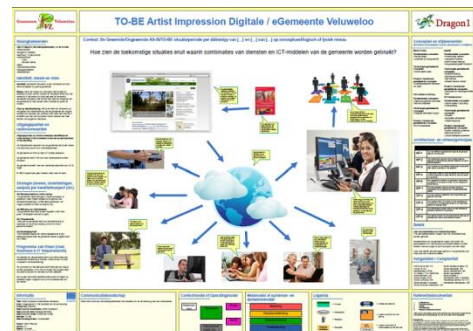
'The correct architecture visualizations at the right moment enable owner-clients, stakeholders, program managers and specialists to gain a common view and understanding of overviews and insights in a short period of time. Next, everyone is in his or her territory or domain empowered to take far better decisions, such as choosing for durable and future-proof solutions.'

The sorts of communication oriented visualizations used in Visual Enterprise Architecture, such as artist impressions, design sketches, principle drawings, collages and structure visions, are derived from the building architecture and are now used for imaging, overview and insights of inter-relationships and decision making in enterprises.

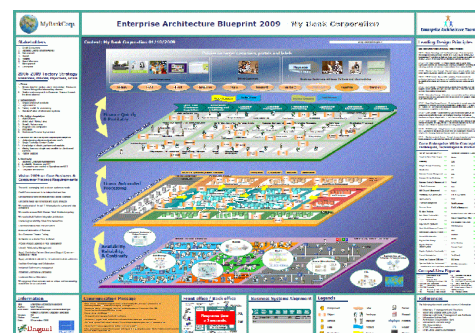
With 24 different generic sorts of standard visualizations for Visual Enterprise Architecture, every stakeholder of a change or innovation, that needs to take decisions for the next step in the project, has a matching view making risk, ROI, budget, time, money and impact visible in the existing organization.

Decision Supporting Visualizations for Stakeholders

With communication oriented visualizations board members, directors and managers are able to organize and structure the entire enterprise compliant to the architecture and have it visualized understandable by the architects.



Next, for every issue, concern, challenge, solution or ambition the impact of change or implementation can be visualized in relation to structure and architecture, but also related to vision, strategic starting points and enterprise requirements.



With the aid of communication oriented visualizations, that are provided with clear context, it is much easier to create in a short period of time a common view and understanding between team members of the interrelationship and coherence in enterprise-structures.

Visual Enterprise Architecture with Dragon1 EA Method

So that decisions are taken far more quickly as opposed to textual documents about the architecture. In strategic change or innovation-projects detailed visualizations help to govern and manage the realization of a solution by project workers.

Whether if it is about design and realization of new enterprises, business processes, information systems or IT Infrastructures, with small sized sketches and drawings of principles and concepts, or big sized blueprints and artist impressions that visualize different situations, one can visualize in a very effective and efficient way a common view and understanding and thus support decision making by stakeholders.

Small cartoonesk visualizations of ambitions and strategic starting points in a year plan, a drawing of the



working mechanism of a principle or a sketch of a total concept for example eHealth or e-service delivery. All of these visualizations will contribute to more support and understanding about difficult issues, concerns and strategic decisions.

Visualizing from Concepts to Solutions

The architecture of a enterprise-structure is according to Dragon1 a coherent set of concepts. Concepts are, in this, the most important parts of architecture. A concept in Dragon1 is a term for depicting and naming an idea, an abstraction, an implementation, an approach or a way of working. A concept is almost synonym to pattern.

New concepts such as self service, cloud computing, web application, open innovation, redundancy, entrepreneurship, optimization, singularity, service orientation, standardization, CRM, etc. can give your enterprise a competitive advantage, but only if you

comply to the rules of the concept for producing the beneficiary results with the way the concept works. You design and build a solid but flexible architecture consisting of concepts.

Dragon1 supports you as an architect or director to identify and to recognize the business concepts and IT concepts that are present in your enterprise today. But also which new concepts fit best your strategy and culture, to implement successfully in the enterprise.

The concepts are used by you to (re)design a new enterprise architecture (total enterprise concept) existing of new and reused concepts in compliance with the concerns and needs of stakeholders. The new enterprise architecture will consist of business architecture, information architecture, technical architecture, security architecture and other architectures whenever needed. Dragon1 facilitates the design and realization of lean and agile architecture and structures.



[1] About Dragon1

Dragon1 is an internationally recognized EA Framework and EA Method by The Open Group.

Dragon1 is also a collaboration platform with specialized tools like Dragon1 as EA Tool and Dragon1 as BPM Tool.

Mark Paauwe is the Founder of Dragon1.

Dragon1 is often used by enterprise architects, CIO's and (project) managers to visualize (parts of) the enterprise and support stakeholders to ask the right requirements to create and build IT systems and to define business transformations.

Of any decision or change that takes place within the organization, the impact (i.e. cost) can be weighed by the different stakeholders, so they may or may not decide to proceed with this change.

Dragon1 consists of a way of thinking, working, representation and supporting which are written in detail on the Dragon1 Wiki, and are described in textbook 'Dragon1 Fundamentals'.