

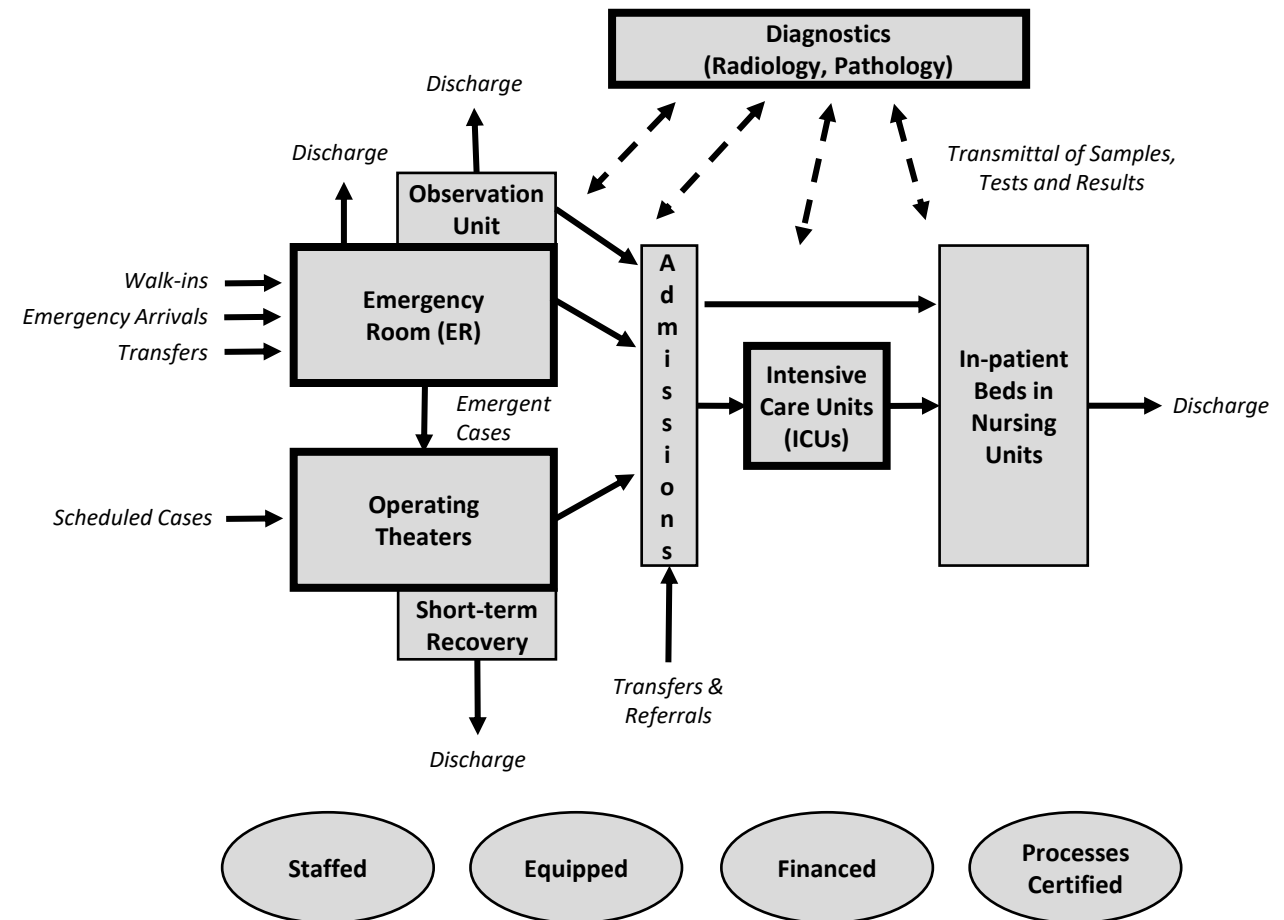
Key Architecture Principles for Hospitals



Hospital Principle 1 (name): The Hospital Operating Principle

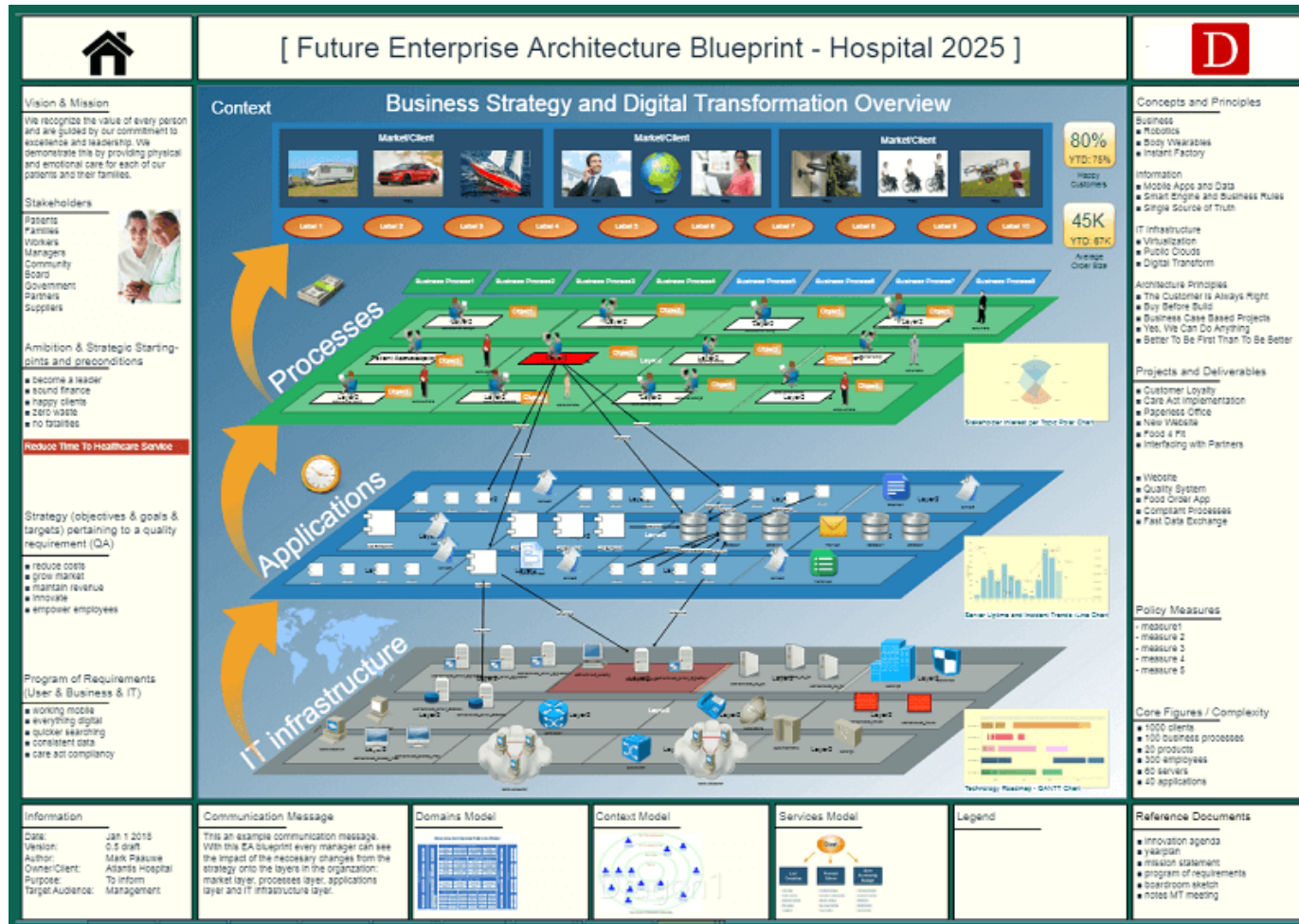
Hospital Principle 1 (title): Presence and collaboration of four key departments is prerequisite to make a Hospital function properly

- Principle 1 (short statement): a hospital can only function properly, such as saving lives in acute situations, if all four key departments are staffed, equipped, financed and working closely together: Emergency Room (ER), Diagnostics, Operating Theaters and ICUs.
- Principle 1 (alternative short statement): By making sure all four key departments are staffed, equipped, financed and working closely together: Emergency Room (ER), Diagnostics, Operating Theaters and ICUs, a hospital can function properly and because of that save lives.
- Principle 1 (long statement): The four core departments of a hospital, a healthcare facility, are: Emergency Department, Diagnostics Department, Operating Theaters, and Intensive Care Units. If any of these departments are understaffed, underequipped, underfinanced and failing to work together or are even missing, the hospital will not function properly, given its mission to save lives, provide healthcare services and facilities for the community and given its common goals of improving patient service, quality of care, staff retention and skills, hospital growth, and finances.



<https://www.dragon1.com/downloads/hospital-architecture-principles.pdf>

Hospital Enterprise Architecture Blueprint



Every Hospital can have an Enterprise Architecture Blueprint like this.

Often, within 1 or 2 weeks, all the data that shown here on the diagram can be collected from sources or via interviews with stakeholders.

The data is placed in a preformatted Excel Sheet.

Download the preformatted Excel Sheet here from a demo:

<https://www.dragon1.com/demo>

Update and edit the Excel Sheet with your own data.

Next you upload the Excel Sheet in the Dragon1 Viewer.

<https://www.dragon1.com/viewer>

After a couple of seconds, the blueprint is generated.

Dragon1 turns the diagram into a decision supporting diagram, by generating a list of dynamic views (overlays), that you can select to watch.