

Dragon1

EA Tool and BPM Tool
Home Premium Edition



Dragon1 is an Enterprise Collaboration platform to collaborate on Enterprise Architecture and Innovation

DRAGON1 AS BPM / EA TOOL

Take visual control over your enterprise solutions such as cloud, big data, flex work, mobile and security. Dragon1 is an Enterprise Collaboration platform for BPM / EA modeling.

7 WEB APPS & SQL DATABASE

Home Premium edition v3 consists of the web apps: My Work, Resource Center, Architecture Repository, Visual Designer, Catalog, Search & Application Manager. User data is stored in Dragon1 Open Format in Oracle or Microsoft SQL database.

PRICING OF USER LICENSES

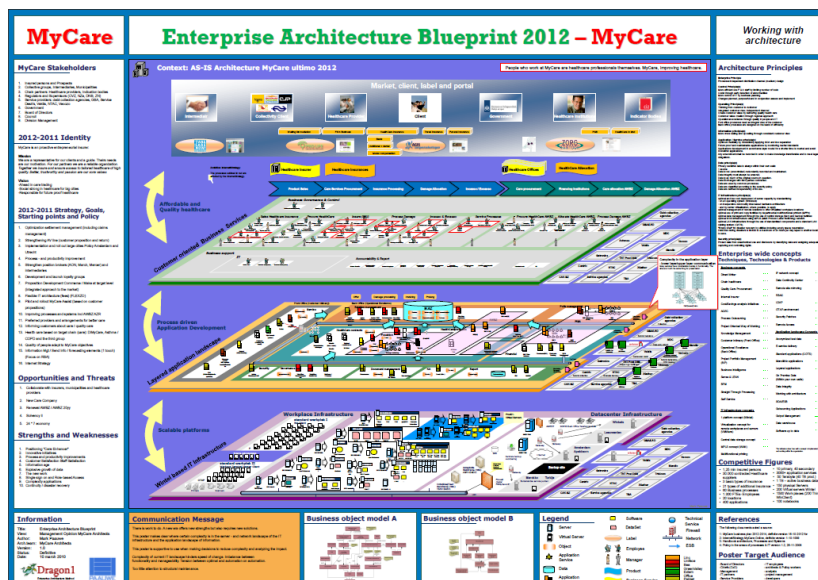
User licenses are per user, per year. Packages of 5, 10, 15, ... users are available. Starting from USD \$1990 per user, per year incl. VAT. Buy your licenses online at <http://store.dragon1.com>.

SERVICE & SUPPORT

A user license entitles you to make use of the 9 hrs. / 6 days Service Desk, Online Help with tutorials and videos & receive full support with your architecture tooling questions or help on data import & creating visualizations.

EXAMPLE PRODUCT: ENTERPRISE ARCHITECTURE BLUEPRINT

This example architecture blueprint is created on Dragon1 as A0-sized poster. Reuse this poster as background for solution architecture blueprints.



Screenshot of a visual architecture product created with Dragon1 - Home Premium edition.

DRAGON1 KEY BENEFITS

- ✓ Create common insights and overviews
- ✓ Plot projects progress
- ✓ Manage issues & risks in projects & solutions
- ✓ Work with verifiable assumptions
- ✓ Always deliver on time
- ✓ Reuse any data available: Import/Export XMI

DRAGON1, SOFTWARE TOOL FOR

- ✓ CIO, CFO & Architect
- ✓ Business & IT Manager, Advisor & Consultant
- ✓ Analyst, Engineer & Administrator



YOUR PACKAGE DEAL

If you purchase a user license, you will get the following:

- ✓ Named user account to login on <http://www.dragon1.com>
- ✓ Free content in your account to modify and to be productive in no time
- ✓ Service, support and user instruction via the Dragon1 International Service Desk

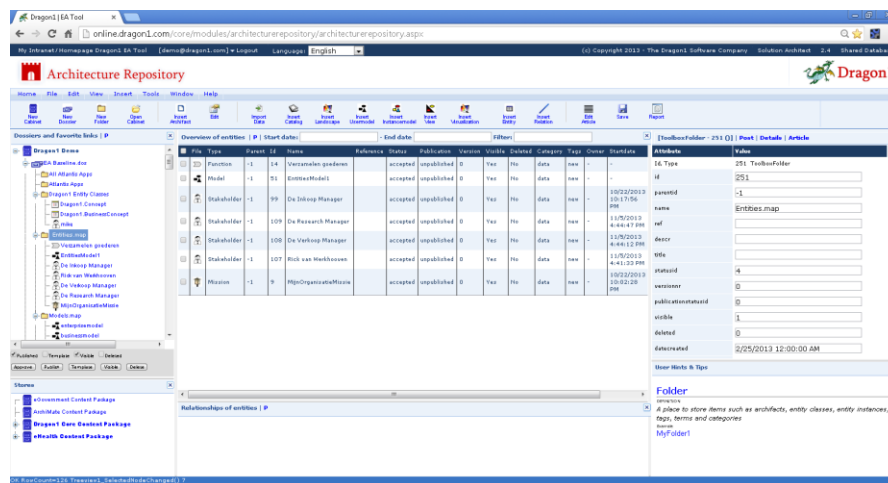
CONTACT US

Contact us via sales@dragon1.com or call +31(0)317 41 13 41, The Netherlands

SCREENSHOT DRAGON1 ARCHITECTURE REPOSITORY WEB APP

Key Features – Dragon1 – Home Premium edition:

- ✓ Collect, model, enrich, relate and store information and data in an enforced consistent way.
- ✓ Import, structure and report information and data where you want it and how you want it.
- ✓ Work with one single source of truth for your data and information.



Screenshot of the Architecture Repository Web Application in a web-browser.

SUPPORTED ARCHITECTURE

FRAMEWORKS

- ✓ DYA
- ✓ Dragon1
- ✓ IAF
- ✓ TOGAF

You can define your own language, method, framework and reference architecture / meta models.

SCREENSHOT DRAGON1 VISUAL DESIGNER WEB APP

Key Features – Dragon1 – Home Premium edition:

- ✓ Generate and visualize views and perspectives of models and meta models
- ✓ Work with layers and splash patterns to create effective visualizations efficiently
- ✓ Define your own reusable vector shapes and compose your own shape collections



Screenshot of the Visual Designer Web Application in a web-browser.

SUPPORTED MODELING STANDARDS

- ✓ ArchiMate
- ✓ BPMN
- ✓ Dragon1
- ✓ OIAm
- ✓ UML

You can define your own visualization language with rules matrices and shapes.

