



**Dragon1 Academy**  
<http://academy.dragon1.com>  
Phone: +31 (0)317 41 61 90  
[academy@dragon1.com](mailto:academy@dragon1.com)

# Brochure

- Become Dragon1 Certified Architecture Professional
- Get familiar with the VEA Core model of Dragon1 and view architecture as total concept
- Learn to order and review common professional architecture baseline products, such as architecture visualizations
- Control the correct formulation and effective visualization of architecture principles
- Provide stakeholders of projects with Management Report Views and the Dragon1 Project Acceleration Architecture (PXA)
- Have architecture visualizations made that support decision making

Dragon1 Certified Architecture Professional Program

## Dragon1 Foundation Training

Training for Architecture Professionals

© 2017 - Dragon1 Architecture Foundation

[www.dragon1.org](http://www.dragon1.org)



**Dragon1**

Architecture Foundation

## Objectives of the Foundation training course

The objective of this Dragon1 Foundation training course is to make Architecture Professionals within a short period of time familiar with visual enterprise architecture and its application in the organization. The Foundation training make the Architecture Professionals also familiar with the way how defined professional architecture products can be designed and used to realize integral solutions.

## Target audience

This training is suited for people who are concerned with architecture in the sense of setup, planning, control, govern, transform and innovate strategy, policy and operations in all domains of the organization like: boardroom members, CxOs, managers, policy workers, head of departments, project managers, specialists, developers, service managers and end users.

## Acquired knowledge

After this training course the participant is able to:

- judge and review professional architecture (baseline) products;
- work using standard architecture processes;
- formulate and visualize certain architecture principles correctly;
- create Management Report Views for stakeholders of projects;
- address communicative visualizations aspects
- judge and review visualizations for decision-making.

## Program

In this training the following subjects will be dealt with and discussed in detail at a professional level:

- Visual Enterprise Architecture in de practice
- Dragon1 way of thinking
- Dragon1 way of representing
- Dragon1 glossary of terms
- Professional Architecture Products
- Architecture as total concept
- Concepts and principles
- Working with architecture
- PXA – PSA (Project Start Architecture)
- Quality criteria for architecture products
- Architecture Vision & Structure Vision
- 2d/3d Enterprise Architecture Blueprint
- 2d/3d Solution Architecture Blueprint
- Application Landscape & Process Landscape
- Design Sketch , Sketchbook and Design book
- Architecture method & architecture framework
- Scenarios and Roadmaps
- Concept diagram, Principle diagram and Situation diagram
- EA Framework, EA Baseline & EA Tooling

## Tangible Results

After the training course the participant will have:

- Finished, Judged & Reviewed Architecture Baseline products such as visualizations
- Presented a professional Architecture Baseline product to the other participants.

## Certification

After successfully completion of the examination for this training course, the participant will become 'Dragon1 Certified Architecture Professional'.

Your accredited training organization (ATO)



**Dragon1**

**Dragon1 Academy**

<http://academy.dragon1.com>

Phone: + 31 (0)317 41 61 90

[academy@dragon1.com](mailto:academy@dragon1.com)

This brochure contains the most important information about this training course. More information is available on request. Please contact your nearest accredited organization.

## Dragon1 Architecture (Baseline) Products

In every organization that works with architecture it is important that the board and management always have access to an up-to-date Architecture Baseline with architecture products and visualizations that supports the strategic decision making. In Dragon1 an Architecture Baseline is viewed as a set of 'living' professional architecture products that are frozen on a certain moment in time. The basis of this training is to discuss, judge and review the basic set of professional architecture baseline products and relationships.

In this training course the participants will learn to finish, judge and review the following professional architecture products, defined in Dragon1 and always part of the Dragon1 Architecture Baseline:

- Enterprise Architecture Framework
- Enterprise Architecture Vision (Design Sketch of a Total Concept)
- Business and IT Structure vision
- 2d/3d Enterprise Architecture Blueprint & Solution Architecture Blueprint
- Process Landscape, Application Landscape & IT Infrastructure Landscape
- Architecture principles & Architecture glossary document
- PXA, the visual PSA, Sketch & Design book
- Scenario Roadmap

## Customization

The basic content of this training course is fixed. And because of small participants groups (max 8 persons) it is possible to integrate specific subjects and assignments.

Your accredited training organization (ATO)



**Dragon1**

**Dragon1 Academy**

<http://academy.dragon1.com>

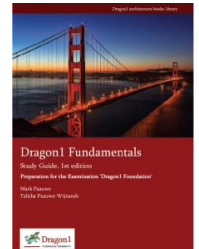
Phone: +31 (0)317 41 61 90

[academy@dragon1.com](mailto:academy@dragon1.com)

## Dragon1 Fundamentals Study Guide, 1st edition, checklists and templates

This training course teaches the participant to work independently with architecture by using:

- Dragon1 Fundamentals
- Dragon1 Wiki
- Open Standard Specifications
- Checklists
- Document Templates



## Dragon1 User Group

After this training the participant can join the Dragon1 User Group in his or her country. The user group is an initiative of users and organizes frequent Dragon1 events for sharing experience and knowledge. Dragon1 is an open EA method that is managed and continuously improved by the Dragon1 Architecture Foundation. This foundation is depending on input from the Dragon1 User Group for the improvement of Dragon1.

## Benefits for participants

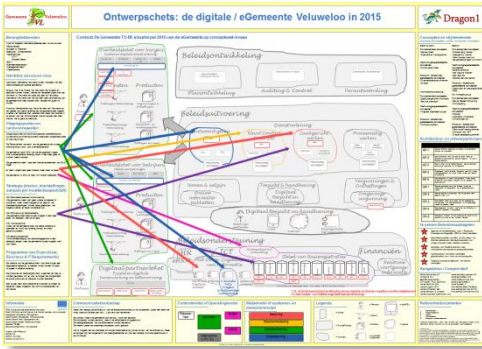
The participants that have attend this training experience more often request for and use architecture products supporting their decision making.

The participants are able to use architecture products to get control of quality and communication in projects. In projects Time, Budget, Quality, Organization, Communication & Information are management indicators. Quality & Communication up until know often where left out too much.

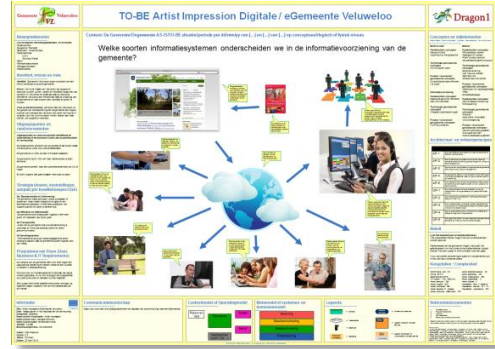
This brochure contains the most important information about this training course. More information is available on request. Please contact your nearest accredited organization.

## Examples of Dragon1 Architecture Baseline products

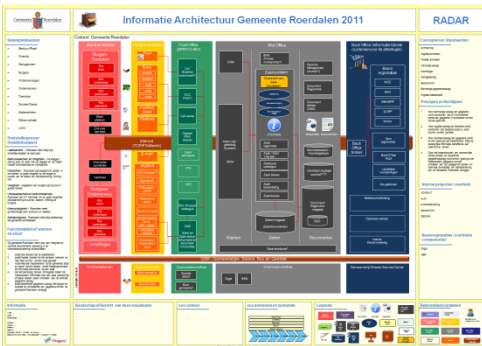
### Enterprise Architecture Vision Sketch



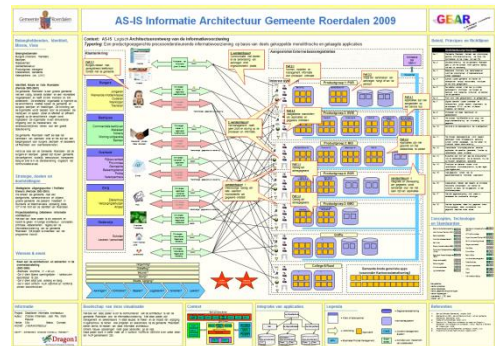
### Process Landscape Impression



### Business IT Structure Vision Drawing



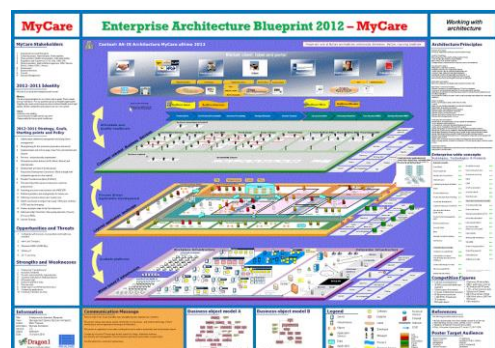
### Application Landscape Drawing



### Practical Training

This training course stimulates participants to work with various architecture visualizations and requires them to finish filled-in visualization templates. The architecture visualizations are all made using the standardized Dragon1 Architecture View Layout, with its characteristic border and division of the context area. The screenshot on this page shows live examples of Dragon1 architecture visualizations from practice.

### Layered 3d Enterprise Architecture Blueprint Drawing



Your accredited training organization (ATO)



**Dragon1 Academy**  
<http://academy.dragon1.com>  
 Phone: +31 (0)317 41 61 90  
[academy@dragon1.com](mailto:academy@dragon1.com)

This brochure contains the most important information about this training course. More information is available on request. Please contact your nearest accredited organization.

## Presupposed knowledge

It is recommended that the participant has certain elementary presupposed knowledge and experience in the field of management, business administration, and one or two areas such as logistics, finance, procurement, IT, etcetera. If you are in doubt of your situation, please contact us.

## Duration and group size

The training lasts 5 days, spread over a period of 5 weeks. The training days are normally from 09.30 AM to 4.30 PM. The max group size is 8 participants.

The participants are expected to do self study, finish architecture products as filled-in templates and carry out homework assignments.

## Investment

The costs for this training, including study guide, training course map, practice materials are USD \$ 3.700,-- or EUR € 2.875,-- excl. VAT. Exam costs are USD \$400,-- or EUR 247,95 excl. VAT.

## Registration and examination

Registration or enrolment is done by sending an e-mail to [academy@dragon1.com](mailto:academy@dragon1.com).

The exam consists of practical assignments finishing architecture products and to do a written multiple choice-test exam. All participants that pass this exam receive the certificate 'Dragon1 Certified Architecture Professional'.

Your accredited training organization (ATO)



**Dragon1**

**Dragon1 Academy**

<http://academy.dragon1.com>

Phone: +31 (0)317 41 61 90

[academy@dragon1.com](mailto:academy@dragon1.com)

## Dragon1

The basis of this training is formed by Dragon1 open EA Method for Visual Enterprise Architecture. Dragon1 offers a glossary of terms, approach (process model) and framework (products) for working architecture effectively.

The participants receive the Dragon1 Fundamentals Textbook that is used throughout the training course at the start. Also the participants receive a Dragon1 Quick Reference Card to practice Visual Enterprise Architecture correctly in practice.

## Dragon1 Architecture Foundation

The Dragon1 training program is established by the Dragon1 Architecture Foundation. The foundation has tasks such as monitoring the correct use, improvement and spread of knowledge of Dragon1.

This training is provided only by accredited training organizations (ATO's). The program of this training course is valid unto Dec. '17 with subject to change and subject to change without prior notice.

The Dragon1 Architecture Foundation is not responsible or accountable for any errors in this offer. It is not permitted to copy this offer or parts thereof in any way to reuse or to be otherwise used without prior written permission of the foundation.

For more information about the Dragon1 open EA method and the Dragon1 Architecture Foundation please visit [www.dragon1.org](http://www.dragon1.org)