



Dragon1 Academy
<http://academy.dragon1.com>
Phone: +31 (0)317 41 61 90
academy@dragon1.com

Brochure

- Become a Dragon1 Certified Architect
- Become thoroughly acquainted with the Dragon1 core model for Visual Enterprise Architecture
- Learn how to create 10 of the most powerful and most popular Architecture Baseline products, including visualizations
- Master the techniques for the robust formulation and visualization of effective architecture principles
- Provide stakeholders visibility in future projects with Dragon1 Management Report Views
- Learn all about the Dragon1 Project Axelarate Architecture (PXA)
- Learn to create rich architecture visualizations supporting decision making

Dragon1 Certified Architects Program

Dragon1 | EA Method Bridge Training

Training for experienced architects

© 2015 - Dragon1 Architecture Foundation

www.dragon1.org



Dragon1

Architecture Foundation

Purpose and Target group

The purpose of this Dragon1 Bridge training course is to provide intensive and accelerated training for experienced architects in order to prepare them in the methods and techniques required to apply Dragon1 EA Method, the open method for Visual Enterprise Architecture. Dragon1 EA Method offers many features that other architecture methods do not address, especially in the field of visualization and communication. This constitutes a major advancement in the skills and techniques available to enterprise architects.

Dragon1 Bridge has been developed for architects with prior enterprise architecture experience and who are keen to learn about the use of Dragon1 architecture visualizations in practice, and want to learn to make important architecture products. And last but not least want to invest and improve in creating and communicating decision supporting architecture visualizations.

After completing the bridge training course

The participant will be:

- familiar with the Dragon1 VEA core model, the essence of the Dragon1 way of thinking;
- able to create Architecture Baseline products;
- able to correctly formulate and visualize effective architecture principles;
- able to provide stakeholders for future projects with Management Report Views;
- able to create a Dragon1 Project Axelarate Architecture (PXA);
- understand the basic terms and definitions and basic concepts of Dragon1;
- understand the communicative aspects of architecture visualizations.

Program

During the Dragon1 Bridge training course, the following topics will be evaluated in detail at professional level:

- The fundamental Dragon1 EA Method, project portfolio, Project Start Architecture, PXA and Solution Architecture
- Architecture Concepts, Principles and Rules
- Working with architecture, Stakeholder analysis
- Business case, quality, concerns, needs and requirements
- Design activities, processes, process models, and business function models
- Types and sorts of principles
- Information systems, applications, modules, interfaces and data, information (structure) model, application model and domain model
- Entities, functions, abilities and capabilities
- Visualizations, Dragon1 VEA Core Model

This will be followed by a final practical assignment.

Tangible Results from the bridge training course

After the course the participant will have:

- created at least 10 Architecture Baseline products, including visualizations;
- presented several Architecture Baseline products to the other participants.

Certification

Upon successful completion of the examination pertaining to this training, the participant will obtain the certificate 'Dragon1 Certified Architect' and will be entitled to use this title.

Your Accredited Training Organization (ATO)



Dragon1

Dragon1 Academy

<http://academy.dragon1.com>

Phone: + 31 (0)317 41 61 90

academy@dragon1.com

This brochure contains the important information about this program. For more information about this program please contact your accredited training organization (ATO).

Dragon1 Architecture Baseline Products

For any organization using architecture, the availability of an up to date architecture baseline is most important in order to support board and management decision making. In Dragon1 an architecture baseline is seen as a set of variable architecture products at a fixed point in time. It is part of the Enterprise Architecture Dossier. An Architecture Baseline created using Dragon1 normally consists of standardized professional architecture products. The basis of this training is to address and create an Architecture Baseline product in each lesson.

During the course participants will learn to create the following 10 professional architecture products that constitute a Dragon1 Architecture Baseline:

- Enterprise Architecture Vision
- Business & IT Structure Vision
- 2d/3d Enterprise Architecture Blueprint
- 2d/3d Solution Architecture Blueprint
- Processes Landscape
- Application Landscape
- Architecture Principles document
- Architecture Terms of Glossary document
- Project Acceleration Architecture (PXA)
- Sketch book or Design book

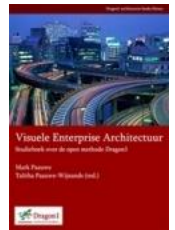
Tailor made subjects and assignments

The content of this course is fixed, so in that sense there is no customization. By keeping the class small there is an opportunity to focus subjects and assignments to the needs and issues in the organization or sector of interest to the participants.

Be an Independent Architect

After following this course, participants will learn how to work with architecture independently in their organization; they will use the following assets:

- Dragon1 Fundamentals (text book)
- Dragon1 Wiki
- Open Standard Specifications
- Checklists
- Document Templates



Dragon1 User Group

Users of Dragon1 are invited to join the Dragon1 User Group. The Dragon1 User Group holds regular meetings for knowledge sharing in the Netherlands. Dragon1 is an open method that is managed by and under continuous improvement by the Dragon1 Architecture Foundation. This foundation is fully dependent on the Dragon1 User Group input for the further development and existence of Dragon1.

Benefits for participants

The architecture products created by the participants will provide a sound basis for decision making.

Participants are often requested to produce architecture products such as an architecture vision and landscapes. One reason for this is the participants proactively respond to the need for such assignments in their organization. The participants are able to produce architecture visualizations for potential clients.

Your Accredited Training Organization (ATO)



Dragon1

Dragon1 Academy

<http://academy.dragon1.com>

Phone: + 31 (0)317 41 61 90

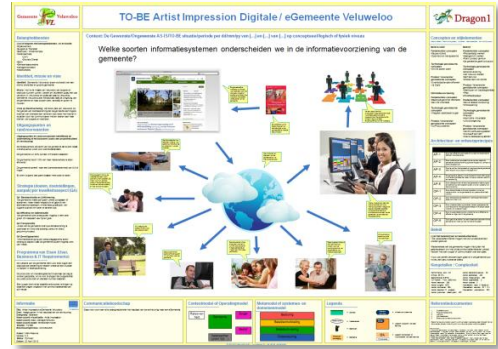
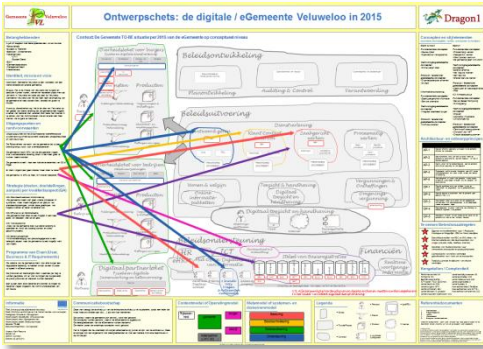
academy@dragon1.com

This brochure contains the important information about this program. For more information about this program please contact your accredited training organization (ATO).

Examples of Dragon1 Architecture Baseline products

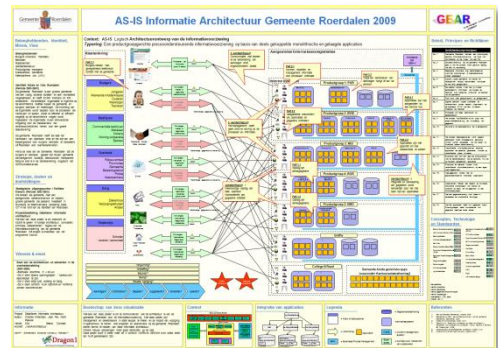
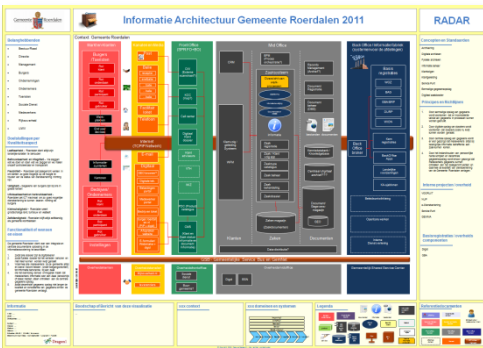
Enterprise Architecture Vision Sketch

Process Landscape Impression



Business-IT Structure Vision Drawing

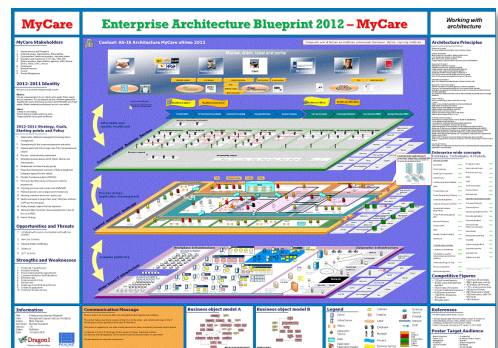
Application Landscape Drawing



Practical Training

3d Enterprise Architecture Blueprint Drawing

This course stimulates participants in the creation of a number of architecture visualizations. The architecture visualizations such as the figures illustrated on this page, which have all been created on the basis of the standard Architecture View Layout from Dragon1, with a characteristic side panel and partitioned context. The figures show screenshots of live example A0-sized posters.



Your Accredited Training Organization (ATO)

This brochure contains the important information about this program. For more information about this program please contact your accredited training organization (ATO).



Dragon1 Academy
<http://academy.dragon1.com>
 Phone: + 31 (0)317 41 61 90
academy@dragon1.com

Anticipated prior knowledge

Participants must have at least three years operational and current experience working in an architecture role. A CV should be submitted together with a completed application form in order to apply for a place on the course.

Duration and Class size

The course consists of 10 sessions normally spread over a period of 18 weeks. The sessions last from 13.00 to 16.00, every two weeks. The maximum group size is five participants.

Participants are expected to undertake self-study and produce architecture products.

Investment

The cost of the course includes the Dragon1 textbook, course binder and practice materials. The cost is € 2.875,- excl. VAT per participant. The cost for the exam fee is € 300,- incl. VAT per participant.

Application and Examination

Registration is made by sending an email to: academy@dragon1.com.

The exam consists of undertaking practical assignments during the course and doing a multiple choice test and an open questions test, scheduled after the training. All participants who pass the exam receive a certificate 'Dragon1 Certified Architect'.

The website of the Dragon1 Architecture Foundation <http://www.dragon1.org> provides more information about the course examination.

Dragon1 | EA Method

The Dragon1 EA Method forms the basis of this training course and is the first open method for Visual Enterprise Architecture, consisting of a glossary of terms, conceptual framework, 4-ways-structure and working processes for working with enterprise architecture.

The participants receive the Dragon1 textbook at the beginning of the training. Participants will also receive a Dragon1 Quick Reference Card, a smart guide for practicing Visual Enterprise Architecture.

Dragon1 Architecture Foundation

The training program is prepared by the Dragon1 Architecture Foundation. The foundation's mission is to ensure the proper use and further dissemination of the Dragon1 EA Method. Also the Dragon1 Architecture Foundation focuses on the continuous improvement of Dragon1, which is supported by the Dragon1 User Group.

This course is provided by Dragon1 Accredited Training Organizations (ATOs) only. This brochure is valid up to the end of December '15. This brochure is subject to modifications and change without prior notification.

Dragon1 Architecture Foundation is not responsible or liable for any error in this brochure. No person, organization or third party is allowed to change or copy this brochure or re-use parts in any way without the prior written permission of the Dragon1 Architecture Foundation.

Your Accredited Training Organization (ATO)



Dragon1

Dragon1 Academy

<http://academy.dragon1.com>

Phone: + 31 (0)317 41 61 90

academy@dragon1.com

For more information about Dragon1 EA Method, the open method for Visual Enterprise Architecture and the Dragon1 Architecture Foundation visit: <http://www.dragon1.org>